



HSS Registered

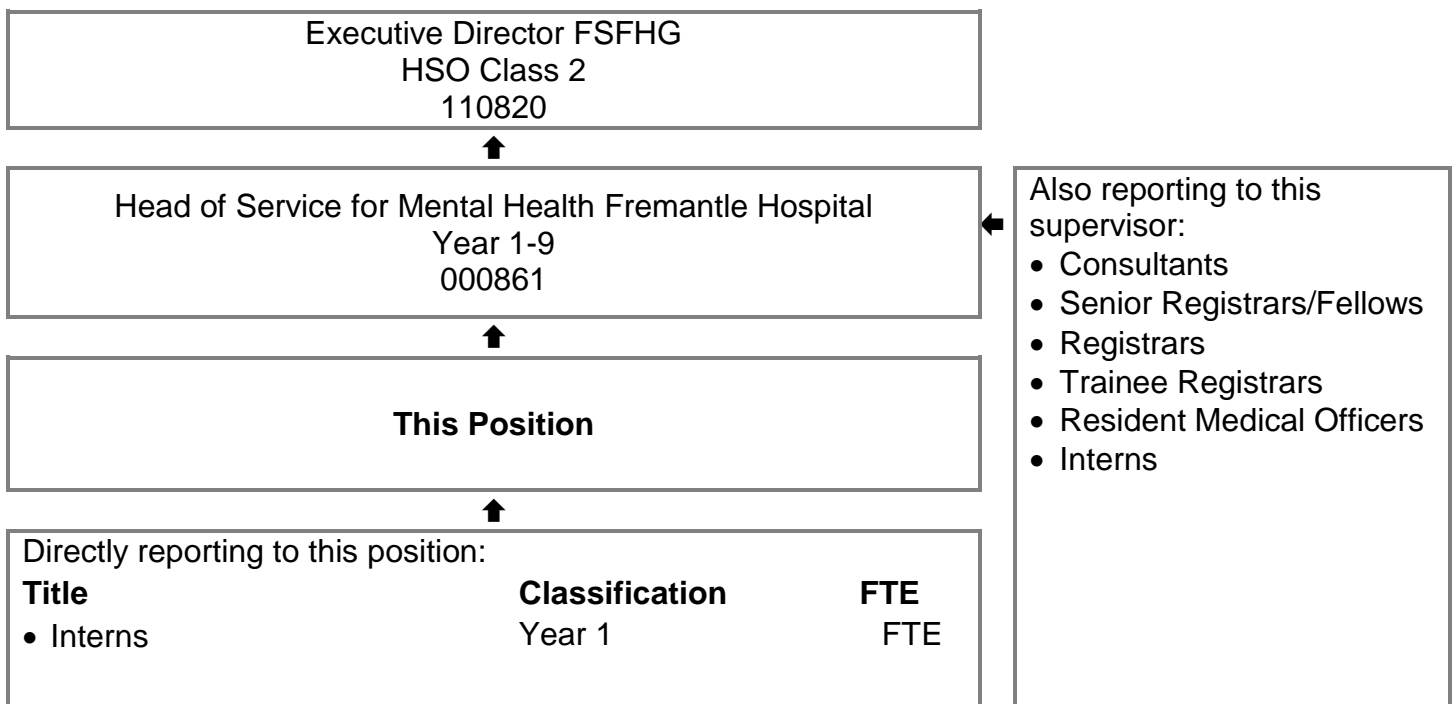
Health Service Medical Practitioner

Medical Practitioners Agreement: Year 1 – 3

Position Number: 001504

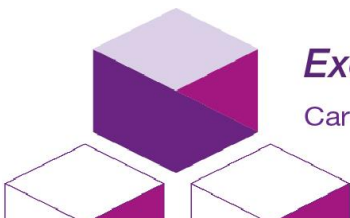
**Fremantle Older Adult Mental Health Service (FOAMHS) / Mental Health Service – Service 5
 Fiona Stanley Fremantle Hospital Group**

Reporting Relationships



Key Responsibilities

Providing and promoting high quality and patient centred care to the clients of Fremantle Hospital Mental Health Service under the supervision of Consultant Psychiatrist. Will be working in collaboration with the multidisciplinary team, in accordance with the hospital's core values of Commitment, Accountability, Respect and Excellence (CARE) to achieve National Standards for Mental Health Service, South Metropolitan Service (SMHS) performance standards and the National Safety and Quality Healthcare Standards.



Excellent health care, every time

Care ■ Integrity ■ Respect ■ Excellence ■ Teamwork

Brief Summary of Duties (in order of importance)

1. General

- 1.1 Under the supervision of a Consultant Psychiatrist, and as part of a multidisciplinary mental health team, to provide an excellent standard of psychiatric care for patients of Fremantle Hospital Older Adult Mental Health Service (FOAMHS).
- 1.2 To contribute to the culture and esteem of the hospital by upholding high professional standards and participating in education, training and research.

2. Clinical

- 2.1 Works within the multidisciplinary team to provide assessment and ongoing management to clients, their families and carers.
- 2.2 Provides clinical evaluation of new and active clients, formulating a differential diagnosis, arranging appropriate investigations and referrals and instituting a documented management plan in conjunction with the supervising consultant.
- 2.3 Providing a report/letter and liaises closely with other team members, notably the patients care co-ordinator, including presentation at weekly Clinical Review Team Meeting.
- 2.4 Ensure that the medical record is accurately updated including dictating clinical letters to referrer and relevant parties.
- 2.5 Liaises and consults with Consultants, Registrars, Medical Officers and General Practitioners and other service providers concerning overall client management.
- 2.6 Develop links with primary care givers i.e. GP's to ensure continuity of treatment and shared care management and provide ongoing education and liaison.
- 2.7 Promotes patient engagement in their care through clear communication with patients/families/nursing homes regarding their condition, options for treatment and progress. Agrees management plan with patient/families. Promotes healthy lifestyle choices and preventative health care.
- 2.8 Discuss client care with the supervising Psychiatrist as required, especially when their condition is not improving or causing clinical concern. Request appropriate assistance as necessary.
- 2.9 Participate in departmental and other meetings as required to meet organisational and service objectives.

3. Education/Training/Research

- 3.1 Participates and engages in continuing professional development and educational activities.
- 3.2 Attends and contributes in grand rounds, hospital and departmental meetings, clinical reviews and other relevant activities as required.
- 3.3 Participates in relevant clinical governance activities including regular clinical meetings and participates in implementation of endorsed recommendations.
- 3.4 Participates in education and training of medical students, interns and other members of the interdisciplinary team through ward rounds and other modalities.
- 3.5 Completes a yearly planning and professional development review of their performance with Head of Service.

4. SMHS Governance, Safety and Quality Requirements

- 4.1 Participates in the maintenance of a safe work environment. Ensures, as far as practicable, the provision of a safe working environment in consultation with staff under their supervision.
- 4.2 Participates in an annual performance development review and undertakes performance development review of staff under their supervision.
- 4.3 Supports the delivery of safe patient care and the consumers' experience including participation in continuous quality improvement activities in accordance with the requirements of the National Safety and Quality Health Service Standards and other recognised health standards.
- 4.4 Supports the delivery of safe patient care and the consumers' experience including identifying, facilitating and participating in continuous safety and quality improvement activities, and ensuring services and practices align with the requirements of the National Safety and Quality Health Service Standards and other recognised health standards.
- 4.5 Completes mandatory training (including safety and quality training) as relevant to role.
- 4.6 Performs duties in accordance with Government, WA Health, South Metropolitan Health Service and Departmental / Program specific policies and procedures.
- 4.7 Abides by the WA Health Code of Conduct, Occupational Safety and Health legislation, the Disability Services Act and the Equal Opportunity Act.

5. Undertakes other duties as directed.

Work Related Requirements

Essential Selection Criteria

1. Eligible for registration as a Medical Practitioner with the Medical Board of Australia.
2. Demonstrated clinical skills and relevant experience working with clients with mental health problems.
3. Demonstrated verbal and written communication skills and interpersonal skills to effectively interact with patients, their families and staff at all levels.
4. Demonstrated organisation and time management skills to provide safe, timely patient centred care.
5. Demonstrated experience and ability to work effectively as part of a multidisciplinary team.
6. Demonstrated participation in continuing medical education activities including regular performance reviews to maintain and upgrade knowledge and skills.
7. Demonstrated ability to monitor and review their clinical effectiveness, note their limitations and put in place strategies to ensure safe patient care.
8. Current “C” or “CA” class drivers licence.
9. Current knowledge of legislative obligations for Equal Opportunity, Disability Services and Occupational Safety and Health, and how these impact on employment and service delivery.

Desirable Selection Criteria

1. Knowledge of the WA Mental Health Act 2014 and other related legislation.
2. Experience working with clients and their families in a Mental Health clinical setting, particularly those over 65.
3. Current knowledge and commitment to Equal Opportunity in all aspects of employment and service delivery.

Appointment Prerequisites

Appointment is subject to:

- Evidence of registration as a Medical Practitioner by the Medical Board of Australia must be provided prior to commencement.
- Evidence of current “C” or “C.A.” class drivers licence.
- Provision of the minimum identity proofing requirements.
- Successful Criminal Record Screening Clearance.
- Successful Pre-Employment Integrity Check.
- Successful Pre-Employment Health Assessment.

Certification

The details contained in this document are an accurate statement of the duties, responsibilities and other requirements of the position.

Manager / Supervisor Name	Signature or	HE Number	Date
Dept. / Division Head Name	Signature or	HE Number	Date

As Occupant of the position I have noted the statement of duties, responsibilities and other requirements as detailed in this document.

Occupant Name	Signature or	HE Number	Date
Effective Date			

HSS Registration Details (to be completed by HSS)

Created on	Last Updated on September 2018
-------------------	---------------------------------------