



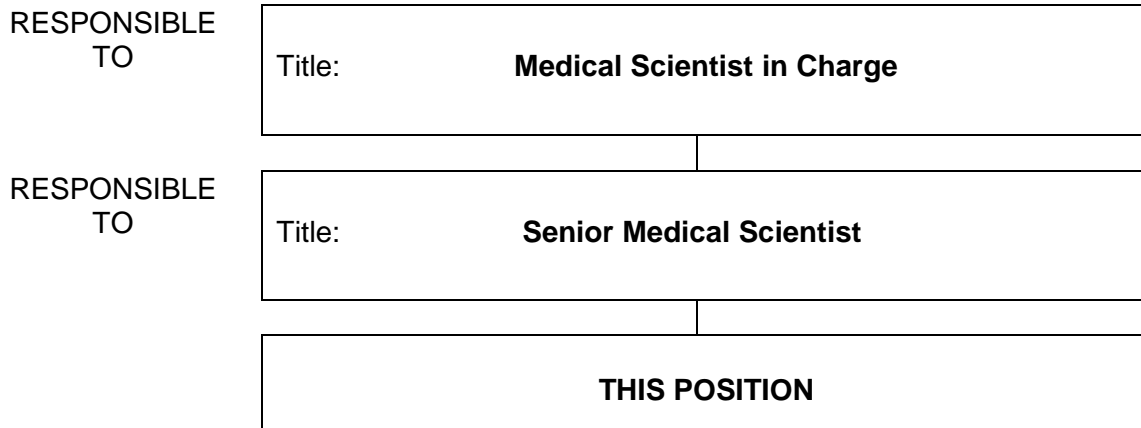
<CLEARANCE REG NO. PWWF2591 – DG22OCT2018>

SECTION 1 - POSITION IDENTIFICATION

NETWORK	QEII
SITE	QEII
DEPARTMENT	Microbiology
SECTION	Bacteriology / Mycology

POSITION TITLE	Medical Scientist
LEVEL	P1
POSITION NO	00004899
AWARD	Health Salaried Officers Agreement

SECTION 2 - POSITION RELATIONSHIPS



Positions under direct Supervision:

<u>Position No.</u>	<u>Title</u>	<u>Classification</u>	<u>FTE</u>
<i>Supervision of laboratory staff may be required depending on the work setting.</i>			

SECTION 3 - KEY RESPONSIBILITIES

State BRIEFLY the key responsibilities or prime function of the position. Refer to definitions of terms to ensure the correct meaning of verbs frequently used eg. Controls, Maintains, etc.

- Applies prescribed procedures and techniques, both routine and complex, to examine clinical specimens within the bacteriology / mycology area.
- Applies modern principles and practices to contribute to the development of improved processes and procedures for the examination of pathology specimens.

JOB DESCRIPTION FORM
PAGE 2 OF 3

MEDICAL SCIENTIST, LEVEL P1, POSITION NO 00004899

SECTION 4 – BRIEF STATEMENT OF DUTIES

Duty No.	Details
<p align="center"><i>Within an assigned area or laboratory in accordance with quality assurance and safety standards:</i></p>	
<p>1.0</p>	<p>PROFESSIONAL</p> <p>1.1 Applies approved procedures and techniques, both routine and complex, to examine clinical specimens within the bacteriology / mycology area.</p> <p>1.2 Examines and interprets results with respect to normal values and their significance in accordance with standard laboratory practice and procedures.</p> <p>1.3 Prepares statistical data and other reports as required.</p> <p>1.4 Participates in the evaluation of procedures in consultation with other professional staff.</p> <p>1.5 Participates in and contributes to staff educational activities.</p> <p>1.6 Participates in quality assurance programmes.</p> <p>1.7 Participates in approved relevant research and developmental projects.</p> <p>1.8 Provides professional advice to internal and external medical and scientific clients.</p> <p>1.9 Maintains equipment, specialist stock and expendable supplies.</p> <p>1.10 Coordinates laboratory staff as required.</p> <p>1.11 Undertakes continuing professional development to maintain professional standards and technical skills.</p>
<p>2.0</p>	<p>OTHER</p> <p>2.1 Performs duties in accordance with organisational Policies and Procedures.</p> <p>2.2 Performs duties in accordance with relevant Occupational Health and Safety and Equal Opportunity Legislation.</p> <p>2.3 Conducts duties in a manner that is ethical and promotes a positive image of PathWest Laboratory Medicine WA.</p> <p>2.4 Participates in Performance Planning and Review.</p> <p>2.5 Performs other duties as directed.</p>
<p><i>Classification Descriptor for Level P1 (Health Professionals Work Value Review)</i> <i>Level P1 provides for health professionals from entry level following tertiary graduation to the maximum point within the Level P1 incremental range.</i></p> <p><i>Initially the work of a new graduate is subject to professional supervision and at entry level the health professional will deliver professional services and will make decisions that impact on the services they provide with formal supervision and guidance from senior health professionals.</i></p> <p><i>As experience is gained, the contribution and the level of professional judgement increases and professional supervision decreases, until a wide range of professional tasks is capable of being performed under general professional guidance. With experience and increased skill level, independent professional judgement will be exercised in recognising and solving problems and managing cases where principles, procedures, techniques and methods require expansion, adaptation or modification.</i></p> <p><i>Having progressed to the maximum point within the Level P1 incremental range the health professional will be an autonomous practitioner.</i></p>	

MEDICAL SCIENTIST, LEVEL P1, POSITION NO 00004899

SECTION 5 - SELECTION CRITERIA

ESSENTIAL MINIMUM REQUIREMENTS

1. Tertiary qualification in medical science relevant to clinical microbiology and eligible for membership of the Australian Institute of Medical Scientists (AIMS).
2. Demonstrated knowledge of laboratory procedures relevant to medical bacteriology / mycology.
3. Demonstrated use of analytical and problem solving skills.
4. Demonstrated good interpersonal and written and verbal communication skills.
5. Demonstrated ability to work cooperatively and effectively in a multi disciplinary team environment.
6. Demonstrated ability to operate within set standards and protocols.
7. Commitment to continued professional development.

DESIRABLE REQUIREMENTS

1. Post-graduate experience in a diagnostic medical microbiology laboratory.
2. Member of relevant professional body.
3. Current knowledge and commitment to Equal Opportunity and Occupational Health & Safety in all aspects of employment and service delivery.

SECTION 6 – APPOINTMENT FACTORS

1. Evidence of eligibility for or current professional membership of the Australian Institute of Medical Scientists (AIMS) must be provided prior to commencement.
2. Participates in after-hours work and rostered duties; including evenings, on-call, weekends and rostered shift work across any of the 24 hours of the day and the 7 days of the week.
3. Medical Scientists required to work without direct supervision are required to have appropriate post graduate experience in the relevant discipline or scientific area.
4. May be required to work across any site within the QEII Network.

LOCATION: QEII Network

ACCOMMODATION:

ALLOWANCES/SPECIAL CONDITIONS:

- **Successful criminal record clearance** as per Department of Health's Criminal Record Screening Policy.
- **Completion of identification check.**
- **Successful Pre-Employment Health Assessment required.**
- **Successful Pre-Employment Integrity checks required**

CERTIFICATION

The details contained in this document are an accurate statement of the duties, responsibilities and other requirements of the position.

HEAD OF DEPARTMENT/ PRINCIPAL SCIENTIST

SITE DIRECTOR

SIGNATURE

SIGNATURE

DATE

DATE

As occupant of the position I have noted the statement of duties, responsibilities and other requirements as detailed in this document.

NAME	SIGNATURE	DATE APPOINTED TO POSITION	DATE