



HSS registered May 2018

## Senior Registrar – Intensive Care

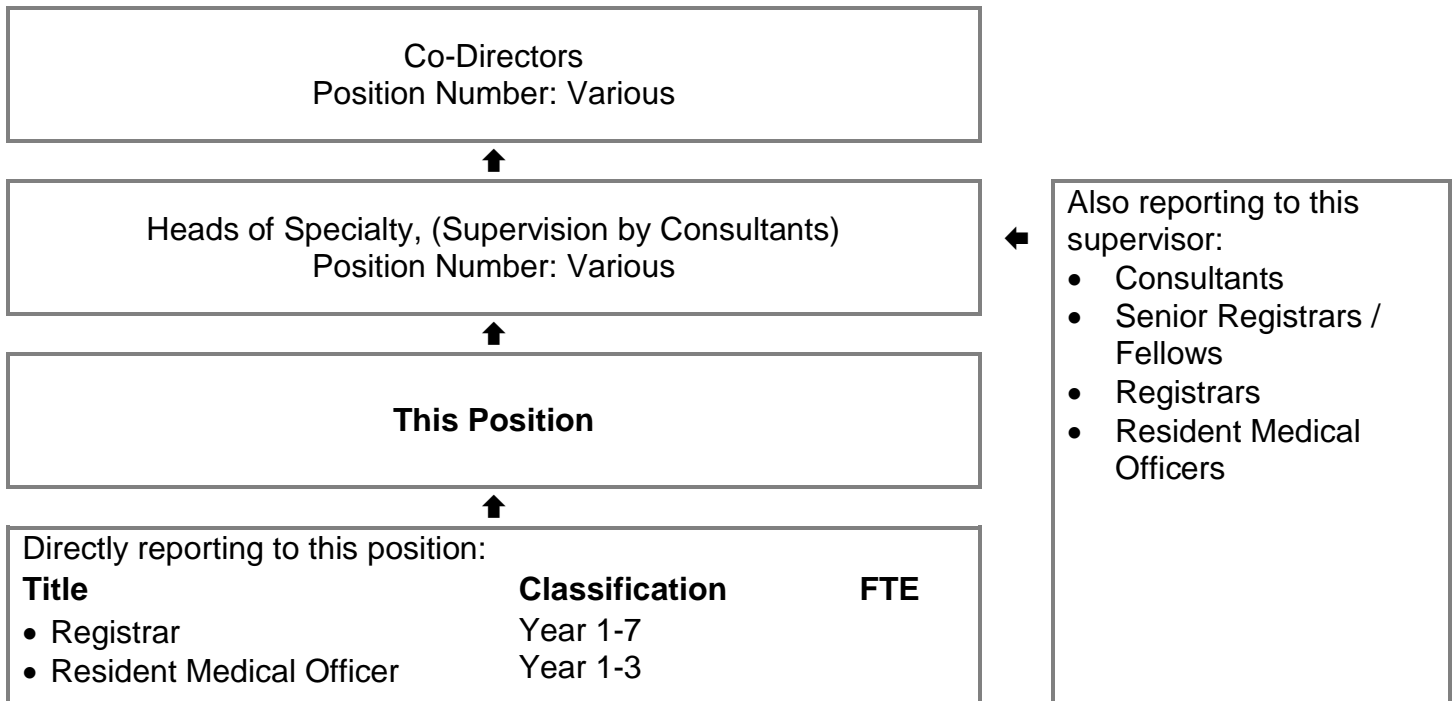
**Medical Practitioners Agreement: Year 1-2**

**Position Number: 007608**

**Western Australia Intensive Care; Primary Employing Health Sites**

**Fiona Stanley Fremantle Hospital Health Group; South Metropolitan Health Service**

### Reporting Relationships



### Key Responsibilities

Positions may be within the Intensive Care Units at the Primary Employing Health Sites (PEHS): Fiona Stanley Fremantle Hospital Group, Royal Perth Bentley Group Hospital or Sir Charles Gairdner Osborne Park Health Care Group.

The position will require the provision of high quality and patient centred care to all Intensive Care Unit (ICU) in-patients under the supervision of the Duty Intensivist within a multi-disciplinary team. The applicant to work within his/her ability and according to the Hospital's mission & core values. Provision of support and teaching to Registrars and Resident Medical Officers within the ICU. Review and provision of advice for patients referred from the Emergency Department, hospital wards and referring hospitals. Participation in the ICU teaching and education program, quality assurance activities and handover processes.

## Brief Summary of Duties (in order of importance)

Senior Registrar - Intensive Care provides inpatient care within any of the Western Australian Intensive Care Units at the Primary Employing Health Sites (PEHS). These duties may vary depending on the unit at the allocated site:

- **Fiona Stanley Hospital (FSH)** - provides tertiary ICU care for all patients in the South Metropolitan Health Service and related Western Australian County Health Service (WACHS) catchment area. FSH is the primary referral centre for the Western Australian Advanced Heart and Lung Failure Service as well as the WA Cardiopulmonary Transplant Service.
- **Royal Perth Hospital (RPH)** - provides tertiary ICU care (with the exception of cardiac surgery) for all patients in the East Metropolitan Health Service and the related WACHS catchment area. RPH is the primary referral centre for Western Australian Major Trauma and Spinal Injury Service.
- **Sir Charles Gardiner Hospital (SCGH)** - provides tertiary ICU care for all patients in the North Metropolitan Health Service and related WACHS catchment area. SCGH is the primary referral centre for the Western Australian Liver Transplant service and the Western Australian Neurosurgical service.

### 1. Clinical

- 1.1 Attends ward rounds in the ICU with the Duty Intensivist and is responsible for the institution of agreed patient management plans.
- 1.2 Performs rostered shifts with early notification of shift changes or illness.
- 1.3 Completes and communicates discharge plans for all eligible ICU inpatients as soon as possible.
- 1.4 Review of patients outside the intensive care unit in a timely manner and liaises with the appropriate hospital inpatient units, the Emergency Department and referring hospitals regarding the outcome of the review.
- 1.5 Provides safe handover of care to the appropriate hospital inpatient unit, or other destination hospital at the time of patient discharge from the Intensive Care Unit
- 1.6 Communicates the patient's condition, prognosis and treatment plan with the patient and their family, or general practitioner using social work and chaplaincy support if needed.
- 1.7 Obtains written or verbal consent for planned procedures when appropriate.
- 1.8 Completes administrative duties including documentation related to quality assurance activities.
- 1.9 Performs procedures within competency limits or under supervision within the ICU.
- 1.10 Assists in the transport of patients within competency limits or under supervision for investigations or procedures outside the Intensive Care Unit.
- 1.11 Support and supervision of Registrars, Resident Medical Officers and other Intensive Care Unit and staff as needed within a multidisciplinary team environment.
- 1.12 Be familiar with and work according to hospital regulations and guidelines and College of Intensive Care Medicine (CICM) policies and regulations relating to trainees in Intensive Care Medicine. Liaise with the hospital (CICM) supervisor of training with regard to training matters

### 2. Education / Training / Research

- 2.1 Participates and engages in continuing professional development and educational activities, including a beginning-of-term planning and end-of-term performance review with the Head of Specialty or delegated consultant and with their Supervisor of Training
- 2.2 Prepares case presentations for grand rounds, hospital and departmental meetings, clinical reviews and other relevant activities as required.

- 2.3 Participates in relevant quality assurance and clinical governance activities including but not limited to regular clinical meetings, adverse event investigations and morbidity/mortality reviews as required and participates in the implementation of endorsed recommendations.
- 2.4 Participates in the education and training of medical students, resident medical officers and other members of the multidisciplinary team through ward rounds, formal presentations, tutorials and other modalities.

### **3. SMHS Governance, Safety and Quality Requirements**

- 3.1 Ensures, as far as practicable, the provision of a safe working environment in consultation with staff under their supervision.
- 3.2 Participates in an annual performance development review and undertakes performance development review of staff under their supervision.
- 3.3 Supports the delivery of safe patient care and the consumers' experience including identifying, facilitating and participating in continuous safety and quality improvement activities, and ensuring services and practices align with the requirements of the National Safety and Quality Health Service Standards and other recognised health standards.
- 3.4 Completes mandatory training (including safety and quality training) as relevant to role.
- 3.5 Performs duties in accordance with Government, WA Health, South Metropolitan Health Service and Departmental / Program specific policies and procedures.
- 3.6 Abides by the WA Health Code of Conduct, Occupational Safety and Health legislation, the Disability Services Act and the Equal Opportunity Act.

### **4. Undertakes other duties as directed.**

## Work Related Requirements

### Essential Selection Criteria

1. Eligible for registration by the Medical Board of Australia.
2. Appointment as a Senior Registrar will ordinarily require that the individual already has:
  - An appointment at Senior Registrar level in a tertiary Intensive Care Unit; OR
  - Fellowship of a medical College recognized for exemption from the requirement to complete the Primary Examination of the College of Intensive Care Medicine (e.g. FRACP, FACEM, FANZCA) or an equivalent Fellowship; OR
  - Completion of the examination requirements for the Fellowship of the College of Intensive Care Medicine; OR substantial progress towards completion of training with the College; OR
  - Substantial experience (usually 2 years or more) in a tertiary intensive care unit.
3. Demonstrated broad case-mix and procedural experience in Intensive Care.
4. Demonstrated ability to provide medical education, teaching, supervision, training and support to Junior Medical Officers.
5. Demonstrated verbal and written communication skills and interpersonal skills to effectively interact with patients, their families and staff at all levels.
6. Demonstrated organizational and time management skills to provide safe, timely patient centred care.
7. Demonstrated ability to monitor and review their clinical effectiveness, note their limitations and put in place strategies to ensure safe patient care.
8. Current knowledge of legislative obligations for Equal Opportunity, Disability Services and Occupational Safety and Health, and how these impact on employment and service delivery.

### Desirable Selection Criteria

1. Attended Cardio-Pulmonary Resuscitation / MET Training Course.
2. A demonstrated interest in quality improvement or research or bedside ultrasonography or medical informatics.

### Appointment Prerequisites

Appointment is subject to:

- Evidence of registration by the Medical Board of Australia must be provided prior to commencement.
- Working With Children (WWC) Check, compulsory check for people who carry out child-related work in Western Australia.
- Completion of 100 Point Identification Check.
- Successful Criminal Record Screening Clearance.
- Successful Pre-Employment Integrity Check.
- Successful Pre-Employment Health Assessment.

**Certification**

The details contained in this document are an accurate statement of the duties, responsibilities and other requirements of the position.

.....  
**Manager / Supervisor Name      Signature      or      HE Number      Date**

.....  
**Dept. / Division Head Name      Signature      or      HE Number      Date**

As Occupant of the position I have noted the statement of duties, responsibilities and other requirements as detailed in this document.

.....  
**Occupant Name      Signature      or      HE Number      Date**  
**Effective Date** .....

**HSS Registration Details** (to be completed by HSS)

**Created on** ..... **Last Updated on**      2 May 2018