

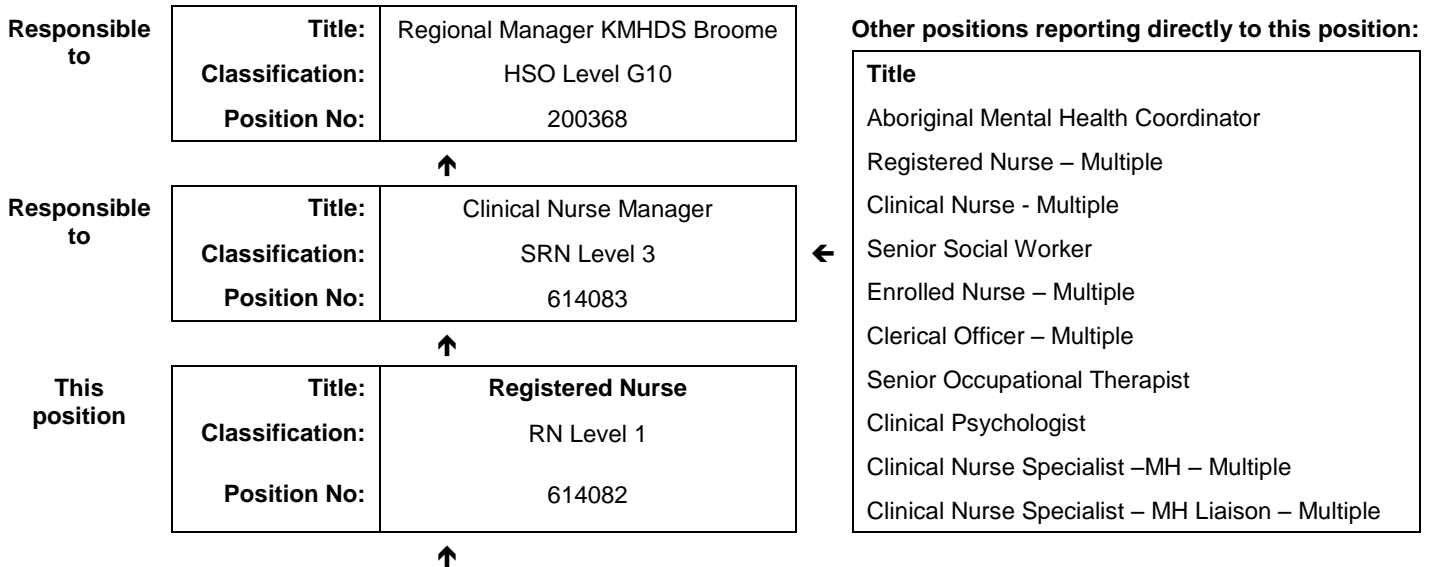


## JOB DESCRIPTION FORM

### Section 1 - POSITION IDENTIFICATION

<b>Division:</b> Kimberley		<b>Position No:</b>  <b>Title:</b>	614082	
<b>Branch:</b> Kimberley Mental Health and Drug Service (KMHDS)			<b>Classification:</b>	Registered Nurse
<b>Section:</b> Broome Mental Health Unit, Mabu Liyan			<b>Award/Agreement:</b>	RN Level 1  Nurses and Midwives Agreement

### Section 2 - POSITION RELATIONSHIPS



<b>Positions under direct supervision:</b>	<b>← Other positions under control:</b>								
<table border="1"> <thead> <tr> <th>Position No</th> <th>Title</th> </tr> </thead> <tbody> <tr> <td> </td> <td> </td> </tr> </tbody> </table>	Position No	Title			<table border="1"> <thead> <tr> <th>Category</th> <th>Number</th> </tr> </thead> <tbody> <tr> <td> </td> <td> </td> </tr> </tbody> </table>	Category	Number		
Position No	Title								
Category	Number								

### Section 3 - KEY RESPONSIBILITIES

Responsible for assessment, planning, implementation and evaluation of high quality, client focused nursing care. Plans and facilitates client activities in collaboration with other members of the multidisciplinary team. Functions in accordance with legislation and policies affecting nursing practice. Liaises and communicates with patients, carers, visitors and staff of the health care team.

TITLE	Registered Nurse	POSITION NO	614082
		CLASSIFICATION	RN Level 1



The WA Country Health Service (WACHS) is the largest country health system in Australia and one of the biggest in the world, providing health services to approximately half a million people, including 45,000 Aboriginal people, over a vast two and a half million square kilometres area.

WA Country Health Service hospitals handle as many births as the State's major maternity hospital – and as many emergency presentations as Perth metropolitan hospitals combined. The range of health services provided cover population health, mental health, Indigenous health and aged care.

Our dedicated and committed staff work hard to fulfil our purpose *Working together for a healthier country WA*, to deliver health services that support the health and well-being of individuals and communities in rural and remote Western Australia.

### **OUR PURPOSE – What we are here to do**

WACHS improves country people's health and well-being through access to quality services and by supporting people to look after their own health.

### **OUR STRATEGIC DIRECTIONS TO 2018**

1. Improving health the experience of care
2. Valuing consumers, staff and partnerships
3. Governance, performance and sustainable services



### **OUR GUIDING PRINCIPLES**

Consumers first in all we do Safe, high quality services and information at all times Care closer to home where safe and viable. Evidence based services

Partnerships and collaboration

### **OUR VALUES**

**Community** – making a difference through teamwork, cooperation, a 'can do' attitude and country hospitality.

**Compassion** – listening and caring with empathy, respect, courtesy and kindness.

**Quality** – creating a quality health care experience for every consumer, continual improvement, innovation and learning.

**Integrity** – accountability, honesty and professional, ethical conduct in all that we do.

**Justice** – valuing diversity, achieving health equality, cultural respect and a fair share for all.

TITLE	Registered Nurse	POSITION NO	614082
		CLASSIFICATION	RN Level 1

**Section 4 - STATEMENT OF DUTIES**

**WA Country Health Service**

**16 March 2018**

**REGISTERED**

Duty No	Details	Freq	%
<b>1</b>	<b>CLINICAL PRACTICE</b>		<b>70</b>
1.1	Provide competent nursing to assigned patients including assessment, planning and implementation of treatment plans and evaluation of care.	D	
1.2	Demonstrates safe nursing practice.	D	
1.3	Acts as a patient advocate	D	
1.4	Demonstrates in practice, knowledge of the Western Australia Mental Health Act (2014).	D	
1.5	Utilises available resources to support decision making.	D	
1.6	Participates in providing individual and group programs.	D	
1.7	Plans and facilitates client activities in collaboration with other staff.	D	
<b>2</b>	<b>INTERPERSONAL SKILLS</b>		<b>10</b>
2.1	Liaises and communicates effectively, both verbally and in writing, with patients, carers, visitors and staff of the health care team.	D	
2.2	Documentation is in accordance with service policy and legal requirements	D	
2.3	Participates effectively in the multidisciplinary team	D	
2.4	Demonstrates confidentiality when dealing with others	D	
<b>3</b>	<b>QUALITY MANAGEMENT</b>		<b>5</b>
3.1	Participates in client focused quality management and accreditation processes	R	
3.2	Provide and maintain appropriate data collection on the health information data base	R	
3.3	Uses resources appropriately	D	
<b>4</b>	<b>PROFESSIONAL ROLE</b>		<b>10</b>
4.1	Acts as a role model for other staff.	D	
4.2	Works as part of a multidisciplinary team to provide culturally respectful and appropriate care to patients.	D	
4.3	Provides ward supervision in the absence of senior staff.	O	
4.4	Functions in accordance with relevant policies and adheres to governing legislation.	D	
4.5	Participates in professional development including professional supervision, performance management, further education and training and keeping up to date with new developments in nursing care practice.	R	
<b>5</b>	<b>OTHER</b>		<b>5</b>
5.1	Maintains knowledge of current Emergency Procedures according to service policies.	R	
5.2	Other duties as directed by line manager or their delegate.	D	

*The occupant of this position will be expected to comply with and demonstrate a positive commitment to the highest achievement level in Equal Employment Opportunity, Occupational Safety & Health, Public Sector Standards, Code of Conduct, Code of Ethics, Quality Improvement, Performance Management, Customer Focus, Disability Services Act and Confidentiality throughout the course of their duties.*

<b>TITLE</b>	<b>Registered Nurse</b>	<b>POSITION NO</b>	614082
		<b>CLASSIFICATION</b>	RN Level 1

### Section 5 - SELECTION CRITERIA

#### ESSENTIAL:

- 1 Eligible for registration in the category of Registered Nurse by the Nursing and Midwifery Board of Australia.
- 2 Demonstrated recent experience and skills in the management of clients with an acute mental illness.
- 3 Demonstrated ability to assess clients and plan, implement and evaluate nursing interventions.
- 4 Demonstrated effective communication skills.
- 5 Demonstrated ability to work in a multi disciplinary team.
- 6 Current C Class drivers Licence and an ability and willingness to travel including overnight stays away from home.

#### DESIRABLE:

- 1 Current knowledge and obligations of relevant legislative, policy and practise in mental health including the National Standards for Mental Health Service, the Western Australian Mental Act (1996), Equal Opportunity, Disability Services and Occupational Safety and Health, Risk Management and Quality and how these affect employment and service delivery.
- 2 Experience providing mental health care to aboriginal people and working in a rural or remote environment.
- 3 Recent inpatient acute mental health experience.
- 4 Possession of or working towards a relevant qualification.
- 5 Ability to undertake ward management in the absence of senior staff.

### Section 6 – APPOINTMENT FACTORS

<b>Location</b>	Broome	<b>Accommodation</b>	As per WACHS Kimberley Accommodation Policy
<b>Allowances/ Appointment Conditions</b>	<p><b>Appointment is subject to:</b></p> <ul style="list-style-type: none"> <li>• Evidence of current registration by the Nursing and Midwifery Board of Australia must be provided prior to Commencement.</li> <li>• Completion of a 100 point identification check</li> <li>• Successful Criminal Record Screening clearance and Working With Children Check (WWCC)</li> <li>• Successful Pre- Placement Health Screening clearance</li> <li>• Evidence of a current C Class Drivers License</li> </ul> <p><b>Allowances include:</b></p> <ul style="list-style-type: none"> <li>• District Allowance as applicable</li> <li>• Annual Leave Travel Concession as applicable</li> <li>• Air Conditioning Subsidy as applicable</li> <li>• Additional week Northwest Leave</li> </ul>		
<b>Specialised equipment operated</b>			

### Section 7 – CERTIFICATION

The details contained in this document are an accurate statement of the duties, responsibilities and other requirements of the position.



Signature and Date: \_\_\_\_/\_\_\_\_/\_\_\_\_  
**Regional Manager**  
**Kimberley Mental Health & Drug Service**

Signature and Date: \_\_\_\_/\_\_\_\_/\_\_\_\_  
**Regional Director**  
**WACHS Kimberley**

As occupant of the position I have noted the statement of duties, responsibilities and other requirements as detailed in this document.

Name	Signature	Date Appointed	Date Signed