

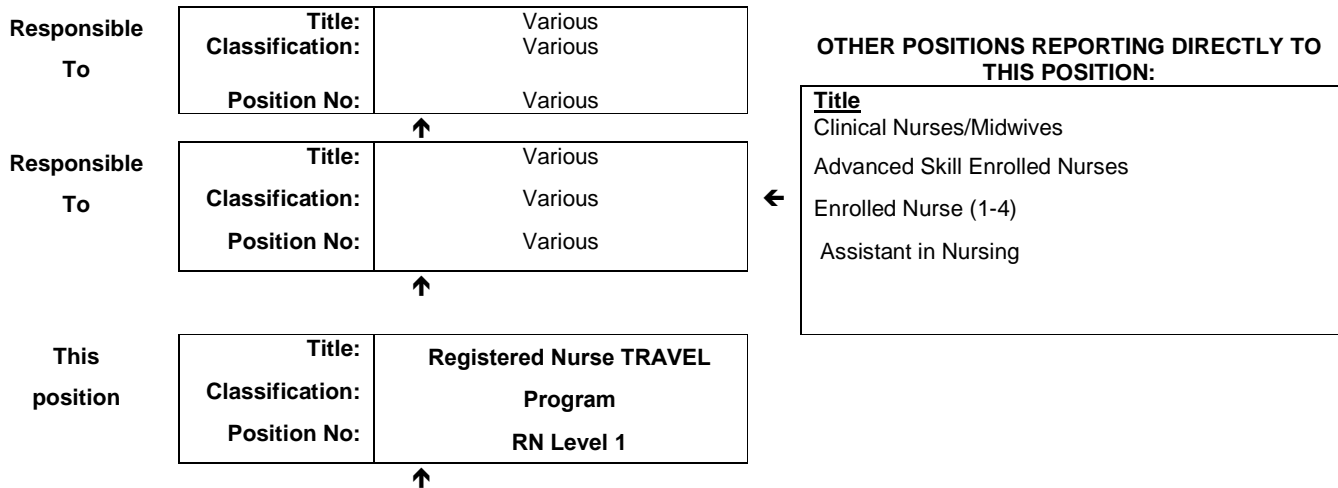


JOB DESCRIPTION FORM

Section 1 – POSITION IDENTIFICATION

WA COUNTRY HEALTH SERVICE		Position No:	Various		
Division:	Various	Title:	Registered Nurse TRAVEL Program		
Branch:	Nursing Services			Classification:	RN Level 1
Section:	Various			Award/Agreement	Nurses and Midwives Agreement

Section 2 – POSITION RELATIONSHIPS



Positions under direct supervision:		← Other positions under control:	
Position No.	Title	Category	Number
	Enrolled Nurse(s)	Level 1-4	Variable
	Advanced Skill Enrolled Nurse(s)	Level 5	Variable
	Assistant in Nursing	Year 1-3	Variable

Section 3 – KEY RESPONSIBILITIES

To provide nursing care for patients within the scope of practice of a Registered Nurse.
To provide clinical supervision for registered nurses, enrolled nurses, assistants in nursing and students.



TITLE	Registered Nurse TRAVEL Program	POSITION NO	Various
		CLASSIFICATION	RN Level 1



The WA Country Health Service (WACHS) is the largest country health system in Australia and one of the biggest in the world, providing health services to approximately half a million people, including 45,000 Aboriginal people, over a vast two and a half million square kilometres area.

WA Country Health Service hospitals handle as many births as the State's major maternity hospital – and as many emergency presentations as Perth metropolitan hospitals combined. The range of health services provided cover population health, mental health, Aboriginal health and aged care.

Our dedicated and committed staff work hard to fulfil our purpose *Working together for a healthier country WA*, to deliver health services that support the health and well-being of individuals and communities in rural and remote Western Australia.

OUR PURPOSE

To improve, promote and protect the health of country Western Australians.

WHAT WE STAND FOR

Quality health services for all.

Improving the health of Aboriginal people and those most in need.

A fair share for country health.

Supporting our team – workforce excellence and stability.

OUR VALUES

Community – making a difference through teamwork, generosity and country hospitality.

Compassion – listening and caring with empathy and dignity.

Quality – creating a quality health care experience for every consumer.

Integrity – accountability, honesty and professional, ethical conduct in all that we do.

Justice – valuing diversity with a fair share for all.

<p>WA Country Health Service – Central Office 24 May 2017 REGISTERED</p>
--

TITLE	Registered Nurse TRAVEL Program	POSITION NO	Various
		CLASSIFICATION	RN Level 1

Section 4 – STATEMENT OF DUTIES

Duty No.	Details	Freq.	%
1.	The Registered Nurse: Maintains their competence to practice in accordance with national competency standards for the Registered Nurse as described by the Nursing and Midwifery Board of Australia		100
2.	Is responsible for the assessment, planning, implementation, facilitation and evaluation of the delivery of patient care.		
3.	Coordinates multidisciplinary services to ensure a high standard of health care delivery.		
4.	Identifies patient education needs and implements appropriate teaching, including coordination of patient education programs.		
5.	Plans and facilitates nursing activities and performs role of shift coordinator as required.		
6.	Actively participates in improvement and research programs in conjunction with others to improve the unit or hospital health care service.		
7.	Participates in unit based decision-making and supports the achievement of unit, hospital, regional and WA Country Health Service objectives.		
8.	Facilitates others in their development of competencies and organisational skills including performance management of designated nursing personnel.		
9.	Is accountable for the safe, efficient and effective use of resources, including assisting with forward planning for the unit.		
10.	Promotes education activities including but not limited to orientation, preceptorship, supervision and validation.		
11.	Undertakes other duties as requested by the line manager.		

The occupant of this position will be expected to comply with and demonstrate a positive commitment to the WACHS values and the highest achievement in demonstrating positive commitment to Equal Employment Opportunity, Occupational Safety & Health, Public Sector Standards, Code of Conduct, Code of Ethics, Quality Improvement, Performance Management, Customer Focus, Disability Services Act and Confidentiality throughout the course of their duties.



TITLE	Registered Nurse TRAVEL Program	POSITION NO	Various
		CLASSIFICATION	RN Level 1

Section 5 – SELECTION CRITERIA

ESSENTIAL

1. Eligible for registration in the categories of Registered Nurse by the Nursing and Midwifery Board of Australia.
2. Demonstrated competent nursing practice, within the relevant practice setting.
3. Demonstrated competence in planning, coordination and decision making in the management of patients, within the relevant practice setting.
4. Demonstrated ability to function as a team leader and team member.
5. Demonstrated effective communication (written and verbal) and interpersonal skills
6. Demonstrates incorporation of quality and risk management within practice.
7. Current knowledge of legislative obligations for Equal Opportunity, Disability Services and Occupational Safety and Health, and how these impact on employment and service delivery.

DESIRABLE

1. Possession of or progression towards an appropriate post-graduate qualification
2. Knowledge of current health issues and the organisational culture of rural health services.
3. Demonstrated computer skills.

Section 6 – APPOINTMENT FACTORS

Location	Various	Accommodation	As determined by the WA Country Health Service Policy
Allowances/ Appointment Conditions	Appointment is subject to: <ul style="list-style-type: none"> • Evidence of current registration by the Nursing and Midwifery Board of Australia must be provided prior to commencement. • Completion of a 100 point identification check • Successful Criminal Record Screening clearance • Evidence of current Working with Children check • Successful Pre- Placement Health Screening clearance • Ability and willingness to travel within Western Australia, as designated within the program 		
Specialised equipment operated			

Section 7 – CERTIFICATION

The details contained in this document are an accurate statement of the duties, responsibilities and other requirements of the position.

Signature and Date: ____/____/____
Executive Services

Signature and Date: ____/____/____
Chief Executive Officer

As occupant of the position I have noted the statement of duties, responsibilities and other requirements as detailed in this document.

Name	Signature	Date Appointed	Date Signed

