

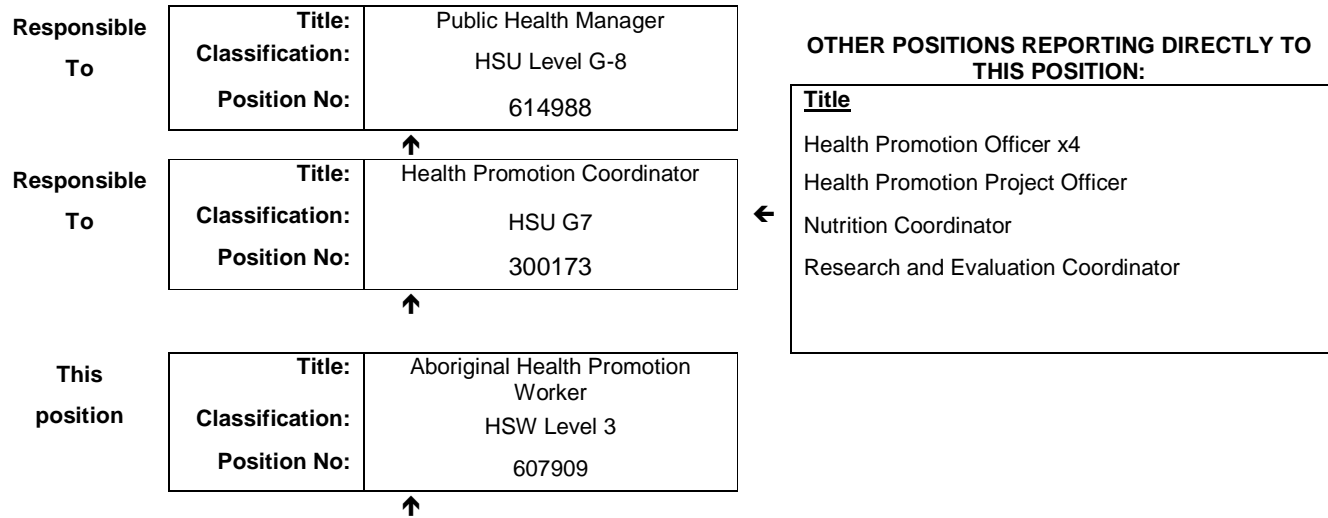


## JOB DESCRIPTION FORM

### Section 1 – POSITION IDENTIFICATION

<b>WA Country Health Service</b>		<b>Position No:</b>	607909
<b>Division:</b>	Pilbara	<b>Title:</b>	Aboriginal Health Promotion Worker
<b>Branch:</b>	Pilbara Population Health	<b>Classification:</b>	HSW Level 3
<b>Section:</b>	Public Health	<b>Award/Agreement</b>	Hospital Support Workers Agreement

### Section 2 – POSITION RELATIONSHIPS



<b>Positions under direct supervision:</b>	<b>← Other positions under control:</b>				
<table style="width: 100%; border-collapse: collapse;"> <tr> <td style="width: 50%; text-align: center;">Position No.</td> <td style="width: 50%; text-align: center;">Title</td> </tr> </table>	Position No.	Title	<table style="width: 100%; border-collapse: collapse;"> <tr> <td style="width: 60%; text-align: center;">Category</td> <td style="width: 40%; text-align: center;">Number</td> </tr> </table>	Category	Number
Position No.	Title				
Category	Number				

### Section 3 – KEY RESPONSIBILITIES

In collaboration with the community, the Public Health team and other Pilbara Population Health teams and staff, plans implements and evaluates comprehensive public health programs and ensures cultural safety and security in the programs.

**WA Country Health Service- Pilbara**

**4<sup>th</sup> October 2016**

**REGISTERED**

<b>TITLE</b>	Aboriginal Health Promotion Worker	<b>POSITION NO</b>	607909
		<b>CLASSIFICATION</b>	HSW Level 3



The WA Country Health Service (WACHS) is the largest country health system in Australia and one of the biggest in the world, providing health services to approximately half a million people, including 45,000 Aboriginal people, over a vast two and a half million square kilometres area.

WA Country Health Service hospitals handle as many births as the State's major maternity hospital – and as many emergency presentations as Perth metropolitan hospitals combined. The range of health services provided cover population health, mental health, Aboriginal health and aged care.

Our dedicated and committed staff work hard to fulfil our purpose *Working together for a healthier country WA*, to deliver health services that support the health and well-being of individuals and communities in rural and remote Western Australia.

**OUR PURPOSE**

To improve, promote and protect the health of country Western Australians.

**WHAT WE STAND FOR**

**Quality health services for all.**

**Improving the health of Aboriginal people and those most in need.**

**A fair share for country health.**

**Supporting our team – workforce excellence and stability.**

**OUR VALUES**

***Community*** – making a difference through teamwork, generosity and country hospitality.

***Compassion*** – listening and caring with empathy and dignity.

***Quality*** – creating a quality health care experience for every consumer.

***Integrity*** – accountability, honesty and professional, ethical conduct in all that we do.

***Justice*** – valuing diversity with a fair share for all.

<p><b>WA Country Health Service- Pilbara</b></p> <p><b>4<sup>th</sup> October 2016</b></p> <p><b>REGISTERED</b></p>
---

<b>TITLE</b>	Aboriginal Health Promotion Worker	<b>POSITION NO</b>	607909
		<b>CLASSIFICATION</b>	HSW Level 3

#### Section 4 – STATEMENT OF DUTIES

Duty No.	Details	Freq.	%
<b>1.0</b>	<b>HEALTH PROMOTION AND EDUCATION</b>		45
1.1	Assists with the provision of formal and informal public health promotion and education to community members with a focus on communicable disease.		
1.2	In partnership with local communities, provides cultural training and support to staff in government and non-government health services to develop skills in delivery of accessible, appropriate and community specific public health programs that meet the needs of the target audiences with a focus on communicable disease.		
1.3	Works in partnership with the community to strengthen its knowledge and confidence to engage and work together to improve public health.		
1.4	In partnership with the community contributes to the development and distribution of culturally appropriate resources in relation to public health priorities.		
1.5	Monitors, records and reports activities and progress to the community and the Public Health team.		
<b>2.0</b>	<b>CLINICAL</b>		20
2.1	Assists with culturally appropriate targeted and opportunistic health screening and contact tracing.		
2.2	Provides support for public health program implementation in high need and under resources areas, for health staff and others, to ensure an effective and sustainable public health program.		
<b>3.0</b>	<b>LIAISON</b>		20
3.1	In partnership with Public Health team members, liaises with the community and key stakeholders to ensure collaboration in development and coordination of activities that contribute to improvements in public health services and public health in the region's population.		
3.2	Assists with the development and maintenance of regional public health networks.		
3.3	Participates in relevant forums and meetings pertaining to public health and Aboriginal health.		
<b>4.0</b>	<b>PROFESSIONAL</b>		10
4.1	Assists the Public Health team with relevant service and practice reviews.		
4.2	In consultation with line management identifies agreed professional development priorities.		
4.3	With support from line management, reflects on health promotion services and resources to enhance evidence-based practice and to inform primary health care service development.		
4.4	Promotes the public health service within WACHS, with service recipients and in the wider Pilbara community.		
4.5	Maintains as required, service activity records including statistical records of client and group contact time and other activities in accordance with professional and organisational requirements.		
<b>5.0</b>	<b>OTHER</b>		5
5.1	Other duties as directed.		
	The occupant of this position will be expected to comply with and demonstrate a positive commitment to the WACHS values and the highest achievement in demonstrating positive commitment to Equal Employment Opportunity, Occupational Safety & Health, Public Sector Standards, Code of Conduct, Code of Ethics, Quality Improvement, Performance Management, Customer Focus, Disability Services Act and Confidentiality throughout the course of their duties.		



<b>TITLE</b>	Aboriginal Health Promotion Worker	<b>POSITION NO</b>	607909
		<b>CLASSIFICATION</b>	HSW Level 3

**Section 5 – SELECTION CRITERIA**

**ESSENTIAL**

1. Pursuant to Section 50(d) of the equal Opportunities Act 1984, this position is restricted to applicants of Aboriginal descent.
2. Possess as a minimum, the Advanced Certificate on Aboriginal Health or equivalent.
3. Previous training or willingness to undertake training in Health Promotion, community development and Public Health as required.
4. Ability to work as a member of a multi-disciplinary team.
5. Effective communication skills (inter-personal, written and verbal).
6. Ability to effectively and efficiently plan and organise own workload.
7. Knowledge of Aboriginal Lore and Culture.
8. Possession of a “Class C” driver’s licence and the ability to travel extensively throughout the Pilbara region.

**DESIRABLE**

1. Experience in working with community.
2. Basic knowledge in Microsoft Programs.

**Section 6 – APPOINTMENT FACTORS**

<b>Location</b>	Pilbara	<b>Accommodation</b>	As determines by the WA Country Health Service Policy
<b>Allowances/ Appointment Conditions</b>	District Allowance if applicable, Annual Travel Concession if applicable, One week additional Leave for above the 26 <sup>th</sup> parallel, Air conditioning subsidy if applicable. Appointment is subject to: <ul style="list-style-type: none"> <li>• Aboriginality in Accordance with Equal Opportunity Act 50(d)</li> <li>• Evidence of possession of Advanced Certificate in Aboriginal Health Work</li> <li>• Completion of a 100 point identification check</li> <li>• Successful Criminal Record Screening clearance</li> <li>• Successful Pre-Placement Health Screening clearance</li> <li>• Successful Working with Children clearance</li> <li>• Evidence of current C Class drivers licence</li> </ul>		
<b>Specialised equipment operated</b>			

**Section 7 – CERTIFICATION**

The details contained in this document are an accurate statement of the duties, responsibilities and other requirements of the position.

Margaret Abernethy  
Signature and Date:  
**Director Population Health**

**WA Country Health Service- Pilbara**

**4<sup>th</sup> October 2016**

**REGISTERED**

Signature and Date:  
**Regional Director**

**WA Country Health Service- Pilbara**

**4<sup>th</sup> October 2016**

**REGISTERED**

As occupant of the position I have noted the statement of duties, responsibilities and other requirements as detailed in this document.

Name	Signature	Date Appointed	Date Signed

**WA Country Health Service- Pilbara**

**4<sup>th</sup> October 2016**

**REGISTERED**