

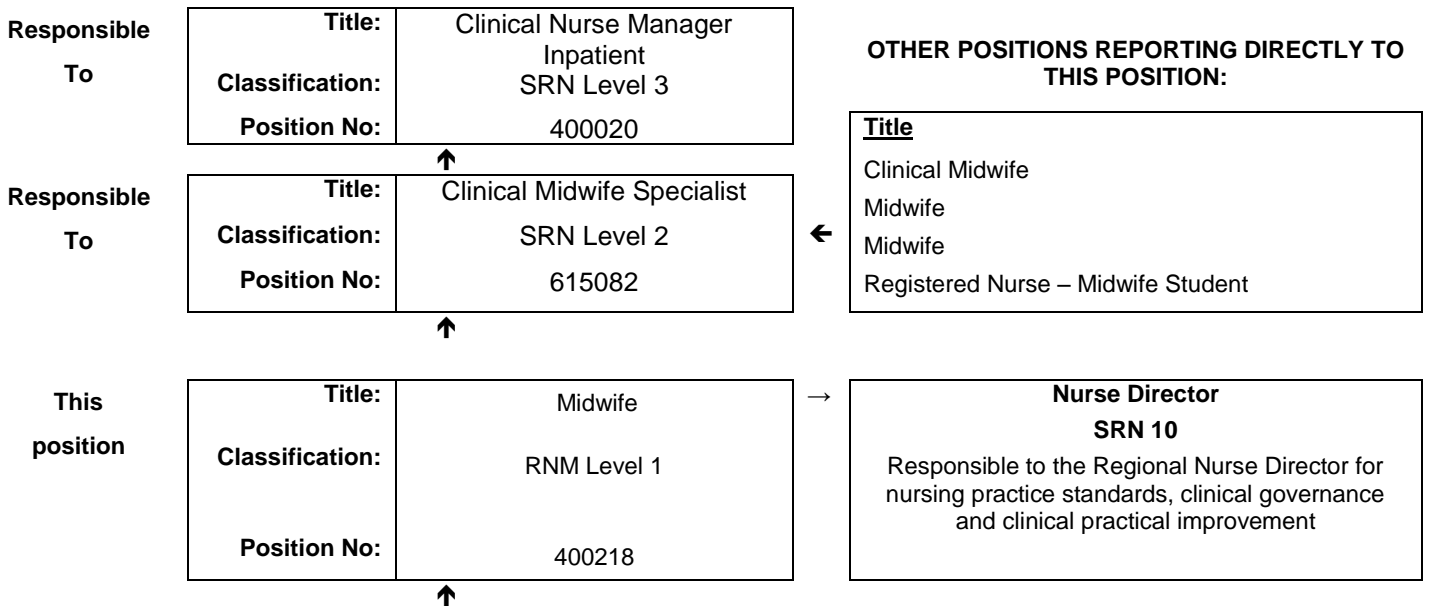


JOB DESCRIPTION FORM

Section 1 – POSITION IDENTIFICATION

WA COUNTRY HEALTH SERVICE		Position No:	400218
Division:	West Pilbara	Title:	Midwife
Branch:	Nursing Services	Classification:	RNM Level 1
Section:	Nickol Bay Hospital	Award/Agreement	Nurses and Midwives Agreement

Section 2 – POSITION RELATIONSHIPS



Positions under direct supervision:	← Other positions under control:				
<table style="width: 100%; border-collapse: collapse;"> <tr> <td style="width: 50%; text-align: center;">Position No.</td> <td style="width: 50%; text-align: center;">Title</td> </tr> </table>	Position No.	Title	<table style="width: 100%; border-collapse: collapse;"> <tr> <td style="width: 50%; text-align: center;">Category</td> <td style="width: 50%; text-align: center;">Number</td> </tr> </table>	Category	Number
Position No.	Title				
Category	Number				

Section 3 – KEY RESPONSIBILITIES

The primary responsibility of the Midwife is to deliver comprehensive, evidence based nursing care for patients within the scope of practice of a Midwife.

WA Country Health Service- Pilbara

25th January 2017

REGISTERED

TITLE	Midwife	POSITION NO	400218
		CLASSIFICATION	RNM Level 1



The WA Country Health Service (WACHS) is the largest country health system in Australia and one of the biggest in the world, providing health services to approximately half a million people, including 45,000 Aboriginal people, over a vast two and a half million square kilometres area.

WA Country Health Service hospitals handle as many births as the State's major maternity hospital – and as many emergency presentations as Perth metropolitan hospitals combined. The range of health services provided cover population health, mental health, Aboriginal health and aged care.

Our dedicated and committed staff work hard to fulfil our purpose *Working together for a healthier country WA*, to deliver health services that support the health and well-being of individuals and communities in rural and remote Western Australia.

OUR PURPOSE

To improve, promote and protect the health of country Western Australians.

WHAT WE STAND FOR

Quality health services for all.

Improving the health of Aboriginal people and those most in need.

A fair share for country health.

Supporting our team – workforce excellence and stability.

OUR VALUES

Community – making a difference through teamwork, generosity and country hospitality.

Compassion – listening and caring with empathy and dignity.

Quality – creating a quality health care experience for every consumer.

Integrity – accountability, honesty and professional, ethical conduct in all that we do.

Justice – valuing diversity with a fair share for all.

WA Country Health Service- Pilbara

25th January 2017

REGISTERED

TITLE	Midwife	POSITION NO	400218
		CLASSIFICATION	RNM Level 1

Section 4 – STATEMENT OF DUTIES

Duty No.	Details	Freq.	%
1.0	The Midwife will: Maintains national competence for Registered Midwives to practice in accordance with the Nurses and Midwifery Board of Australia.		100
2.0	Responsible and accountable for patient safety and quality of care through planning, coordination, performing, facilitating and evaluating the delivery of patient care in the practice setting		
3.0	Provides high level evidenced based midwifery care within the scope of nursing practice decision making framework, following clinical pathways, polices, procedures and adopting a risk management customer focused approach in patient care.		
4.0	Coordinate multidisciplinary services to ensure a high standard of customer focused health care delivery.		
5.0	Identifies patient education needs and implements appropriate teaching, including coordination of patient education programs.		
6.0	Plans and facilitates nursing activities and performs role of shift coordinator on a shift by shift basis being responsible for student nurses and/or Enrolled Nurses and/or Assistants in Nursing under their supervision.		
7.0	Fulfils National governing Safety and Quality Health Service Standards requirements including but not limited to: <ul style="list-style-type: none"> a. Participating in continuous safety and quality improvement actions, such as audits, reviews and drills that result in improvements to patient care, staff knowledge or the consumers experience and that align with actions described within the standard b. Participating with the development, implementation, reporting and monitoring of quality assurance measures and activities c. Ensuring records and statistics are kept in accordance with established procedures d. Undertaking annual performance development review 		
8.0	Participates in unit based decision-making and supports the achievement of unit, hospital, regional and WA Country Health Service objectives.		
9.0	Facilitates others in their development of competencies and organisational skills including performance management of designated nursing personnel.		
10.0	Be accountable for the safe, efficient and effective use of resources, including assisting with forward planning for the unit.		
11.0	Promotes education activities including but not limited to orientation, preceptorship, supervision and validation.		
12.0	Participates in the on-call roster as required.		
13.0	Other duties as requested by the line manager.		

The occupant of this position will be expected to comply with and demonstrate a positive commitment to the WACHS values and the highest achievement in demonstrating positive commitment to Equal Employment Opportunity, Occupational Safety & Health, Public Sector Standards, Code of Conduct, Code of Ethics, Quality Improvement, Performance Management, Customer Focus, Disability Services Act and Confidentiality throughout the course of their duties.

**WA Country Health
Service- Pilbara**

25th January 2017

REGISTERED

TITLE	Midwife	POSITION NO	400218
		CLASSIFICATION	RNM Level 1

Section 5 – SELECTION CRITERIA

ESSENTIAL

1. Eligible for registration in the category of Midwife by the Nursing and Midwifery Board of Australia.
2. Demonstrated clinical knowledge and experience in the delivery of evidence based midwifery care within the relevant practice setting.
3. Demonstrated competence in planning, coordination and decision making within the relevant practice setting.
4. Demonstrated ability to function as a team leader and team member.
5. Demonstrated effective communication (written and verbal) and interpersonal skills including negotiation and conflict resolution skills
6. Demonstrates incorporation of quality and risk management principles within practice.
7. Current knowledge of legislative obligations for Equal Opportunity, Disability Services and Occupational Safety and Health, and how these impact on employment and service delivery.
8. Demonstrated understanding and knowledge of the Aboriginal cultural respect framework.
9. Possess a C Class Drivers Licence.
10. The ability to be on call

DESIRABLE

1. Possession of or progression towards an appropriate post-graduate qualification
2. Knowledge of current health issues and the organisational culture of rural health services.
3. Demonstrated computer skills.

Section 6 – APPOINTMENT FACTORS

Location	Karratha	Accommodation	As determined by the WA Country Health Service Policy
Allowances/ Appointment Conditions	Appointment is subject to: <ul style="list-style-type: none"> • Evidence of current registration by the Nursing and Midwifery Board of Australia must be provided prior to commencement. • Completion of a 100 point identification check • Successful Criminal Record Screening clearance • Evidence of current Working with Children check • Successful Pre- Placement Health Screening clearance • A current C class drivers licence and ability to travel within the region 		
Specialised equipment operated			

Section 7 – CERTIFICATION

The details contained in this document are an accurate statement of the duties, responsibilities and other requirements of the position.



Signature and Date:
District Director of Nursing- West Pilbara



Signature and Date:
Regional Director

As occupant of the position I have noted the statement of duties, responsibilities and other requirements as detailed in this document.

Name	Signature	Date Appointed	Date Signed

