



HSS Registered November 2016

Senior Social Worker - General Surgery

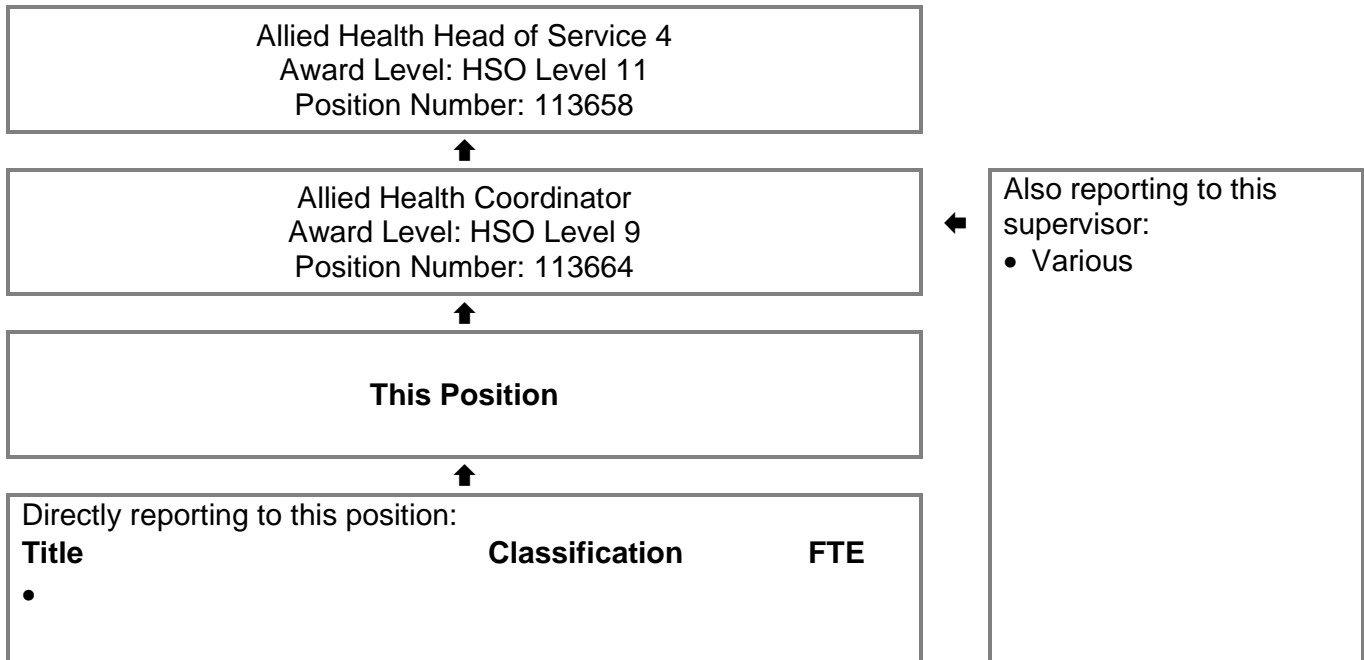
Health Salaried Officers Agreement; HSO Level P2

Position Number: 114292

Allied Health / Service 4

Fiona Stanley Hospital / South Metropolitan Health Service

Reporting Relationships



Directly reporting to this position:

Title	Classification	FTE
•		

Key Responsibilities

As part of the inter-disciplinary team, provides Social Work services to patients in the clinical specialty area of general surgery using advanced Social Work clinical practice skills. Supports the Allied Health Head of Service and Allied Health Coordinator in providing supervision to the P1 staff in the unit/clinical area, including allocating clinical duties and in managing performance. Acts as a Social Work clinical consultant/resource to Social Workers and other health professionals. Plans, implements and evaluates patient safety and quality of care. Practices as a Senior Social Worker in accordance to the Australian Association of Social Workers Practice Standards 2013 and Code of Ethics 2010 and/or the Society of Professional Social Workers Code of Ethics and SMHS policies and guidelines.

Senior Social Worker – General Surgery | HSO Level P2 | 114292

Brief Summary of Duties (in order of importance)

1. Clinical

- 1.1 Provide evidence based Social Work services to patients/clients within the clinical specialty area/s.
- 1.2 Provide Social Work assessment, intervention and evaluation at an advanced practice level for complex and general caseload/s.
- 1.3 Undertake clinical shifts at the direction of the Allied Health Head of Service and Allied Health Coordinator including participation on the on-call/after-hours/weekend roster if required.
- 1.4 Ensure prioritisation and delegation of duties of Social Work caseloads for own and staff under their supervision.
- 1.5 Participate in clinical review meetings and case conferences as appropriate.
- 1.6 Provide advanced clinical consultation to Social Workers, other health professionals and others.
- 1.7 Identify opportunities and participate in quality improvement activities in consultation with the Allied Health Head of Service and Allied Health Coordinator to systematically evaluate service delivery and meet customer needs.
- 1.8 Educate patients/carers in post discharge management and organise discharge summaries/referrals to other services, as appropriate.
- 1.9 Support and liaise with patients, carers, colleagues, medical, nursing, allied health, support staff (including Catering), external agencies and the private sector to provide coordinated multidisciplinary care.
- 1.10 Ensure maintenance of appropriate clinical documentation and clinical information systems required of Social Work staff under their supervision including own caseload.
- 1.11 Participate in Service stream meetings as required to meet organisational and service objectives.
- 1.12 Participate in ongoing evaluation of clinical practice.

2. Education/Training/Research

- 2.1 Engage in continuing professional development/education and ensures continuous eligibility for the Australian Association of Social Workers or the Society of Professional Social Workers as per essential criterion 1.
- 2.2 Ensure professional support, clinical orientation and direction is provided to P1 staff as set by the Allied Health Education Director and Professional Lead.
- 2.3 Undertake supervision and development of Social Work students and other tertiary students if appropriate.
- 2.4 Develop and participate in evidence based clinical research activities, where applicable, as directed by the Allied Health Head of Service/Allied Health Research Director.

3. SMHS Governance, Safety and Quality Requirements

- 3.1 Ensures, as far as practicable, the provision of a safe working environment in consultation with staff under their supervision.
- 3.2 Participates in an annual performance development review and undertakes performance development review of staff under their supervision.
- 3.3 Supports the delivery of safe patient care and the consumers experience including identifying, facilitating and participating in continuous safety and quality improvement activities, and ensuring services and practices align with the requirements of the National Safety and Quality Health Service Standards and other recognised health standards.
- 3.4 Completes mandatory training (including safety and quality training) as relevant to role.
- 3.5 Performs duties in accordance with Government, WA Health, South Metropolitan Health Service and Departmental / Program specific policies and procedures.

Senior Social Worker – General Surgery | HSO Level P2 | 114292

3.6 Abides by the WA Health Code of Conduct, Occupational Safety and Health legislation, the Disability Services Act and the Equal Opportunity Act.

4. Undertakes other duties as directed.

Work Related Requirements

Essential Selection Criteria

1. Tertiary qualification in Social Work and eligible for full membership of the Australian Association of Social Workers or the Society of Professional Social Workers.
2. Demonstrated extensive relevant clinical Social Work experience within the specialty area.
3. Demonstrated ability to apply evidence based and quality improvement principles using Social Worker knowledge to patient management at an advanced practice level.
4. Demonstrated ability in applying time management and organisational skills.
5. Demonstrated high level interpersonal, written and verbal communication skills including the ability work effectively in a multidisciplinary team.
6. Demonstrated ability to supervise and support Social Work staff and students.
7. Current knowledge of legislative obligations for Equal Opportunity, Disability Services and Occupational Safety and Health, and how these impact on employment and service delivery.

Desirable Selection Criteria

1. Completion or progress towards a relevant postgraduate qualification/advanced training.
2. Previous experience in a hospital or health related setting

Appointment Prerequisites

Appointment is subject to:

- Evidence of eligibility for or current full membership of the Australian Association of Social Workers or the Society of Professional Social Workers must be provided prior to commencement.
- Completion of 100 point identification check.
- Successful Criminal Record Screening Clearance.
- Successful Pre-Employment Integrity check.
- Successful Pre-Employment Health Assessment.

Certification

The details contained in this document are an accurate statement of the duties, responsibilities and other requirements of the position.

.....
Manager / Supervisor Name

.....
Signature or

.....
HE Number

.....
Date

.....
Dept. / Division Head Name

.....
Signature or

.....
HE Number

.....
Date

As Occupant of the position I have noted the statement of duties, responsibilities and other requirements as detailed in this document.

.....
Occupant Name

.....
Signature or

.....
HE Number

.....
Date

.....
Effective Date

HCN Registration Details (to be completed by HCN)

Created on

Last Updated on

04/11/2016 HE115331