

# NEW MUSEUM FOR WA

## Candidate Information

BE PART OF THE WESTERN AUSTRALIAN MUSEUM'S TRANSFORMATION

**Western Australian Museum**



WESTERN AUSTRALIAN  
**museu**m****



## Message from the Museum's CEO

Western Australia is an amazing place. The stories of its history, its landscape, its environment and its people are packed with superlatives.

The Western Australian Museum, more than 120 years old, has a pivotal role to play in discovering, releasing and sharing the narratives of this extraordinary State.

The Museum's main buildings in Perth are showing their age and our State Government recognises the importance of developing cultural facilities, both for the benefit of Western Australians and to attract investors, employers, workers and visitors.

This is why the State Government has committed to the development of a new Western Australian Museum in Perth's Cultural Centre. This will incorporate the magnificent historic buildings of the current Museum and will create new infrastructure, increasing floor space four-fold and the Museum's appeal and functionality by a far greater factor!

With a price tag in excess of \$400 million this is quite simply one of the most significant cultural infrastructure projects in the world today.

We are privileged to have this unprecedented opportunity to create a cultural institution of truly global significance.

With this opportunity, of course, comes huge responsibility. Our challenge is to create a Museum worthy of this great State and that will serve it for many generations to come.

We look forward to working with you to meet this exciting challenge.

**Alec Coles**

# WA Museum Governance

The Western Australian Museum is a statutory authority within the Western Australian Government's Culture and the Arts Portfolio.

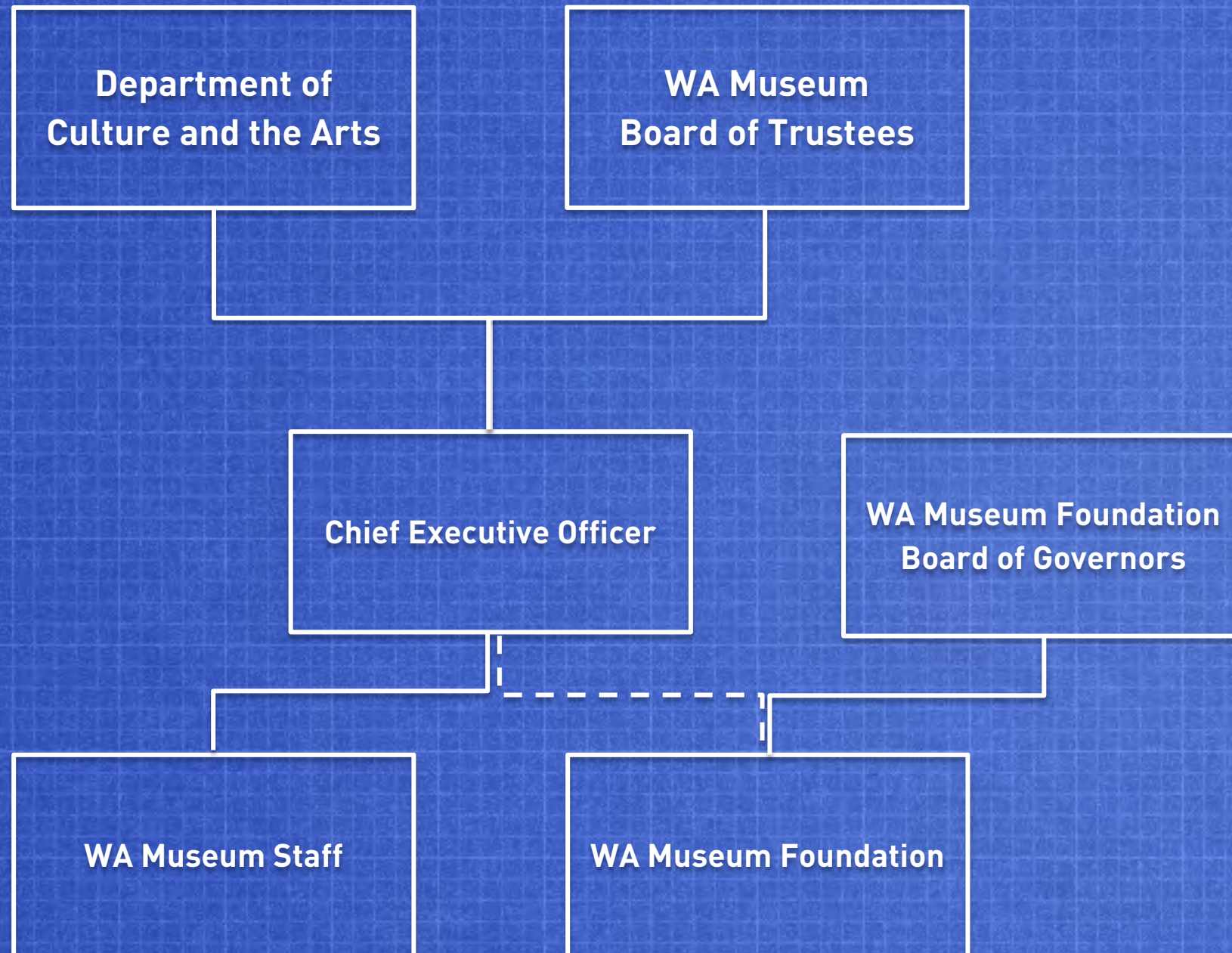
It is a Body Corporate with Perpetual Succession and Common Seal established under the *Museum Act* (1969). It is governed by a Board of eight Trustees, including the Chair and Vice Chair.

The Governor of Western Australia appoints seven Trustees. The Director General of the Department of Culture and the Arts, or his/her nominee, is the eighth Trustee, *ex officio*.

The Western Australia Museum Trustees by the *Museum Act* are responsible for the "management and control of the property and affairs of the Western Australian Museum and are authorised to do all things that in their opinion are best calculated to carry out the functions of the Museum."

The WA Museum Trustees are:

- Emeritus Professor Alan Robson** (Chair)
- Ms Sara Clifton** (Vice Chair)
- Mr Ian Fletcher**
- Dr Katherine (Kate) Gregory**
- Mr Duncan Ord** (*ex-officio*)
- Mr Steve Scudamore**
- Ms Irene Stainton**
- Ms Rubini Ventouras**





Perth



Fremantle



Kalgoorlie-Boulder



Geraldton



Fremantle



Albany

## About us

The Western Australian Museum has a long and proud history since its establishment in 1891.

It is responsible for six public museums, a collections research centre and an outreach function spread across the largest State in the world. It is also responsible for the management of some 200 shipwreck sites and eight archaeological sites.

The Museum is custodian of more than 4.5million objects that document and celebrate the unique environment and people of Western Australia. This collection is an invaluable resource for researching the past, understanding the present and addressing the challenges of the future.

The Museum's research, much of it in partnership with industry, continues to reveal WA's natural and cultural heritage. It is critical for the effective management of our State, its land, sea and natural resources.

In developing our New Museum, we want people to explore and share their culture; we want to promote tolerance and understanding; and we want to provoke a sense of curiosity about our State - its long history, amazing wildlife, ancient landscapes and abundant oceans.

In 2013-14 across all sites, the Museum:

- attracted 927,014 visitors, including 49,290 in school groups;
- displayed 40 travelling and special exhibitions;
- delivered programs to 183,246 participants;
- had 1,650,371 unique website visits;
- published 75 peer-reviewed research papers, four non-refereed reports, 18 conference papers, six popular publications and 145 reports to consultants; six book chapters and 3 in-house journals; and
- undertook 29 collaborative research projects, including 23 with international partner agencies and institutions



## Our Mission

We inspire people to explore and share their identity, culture, environment and sense of place, and to contribute to the diversity and creativity of our world.

## Our Values

We are dedicated to community value which means that we will be:

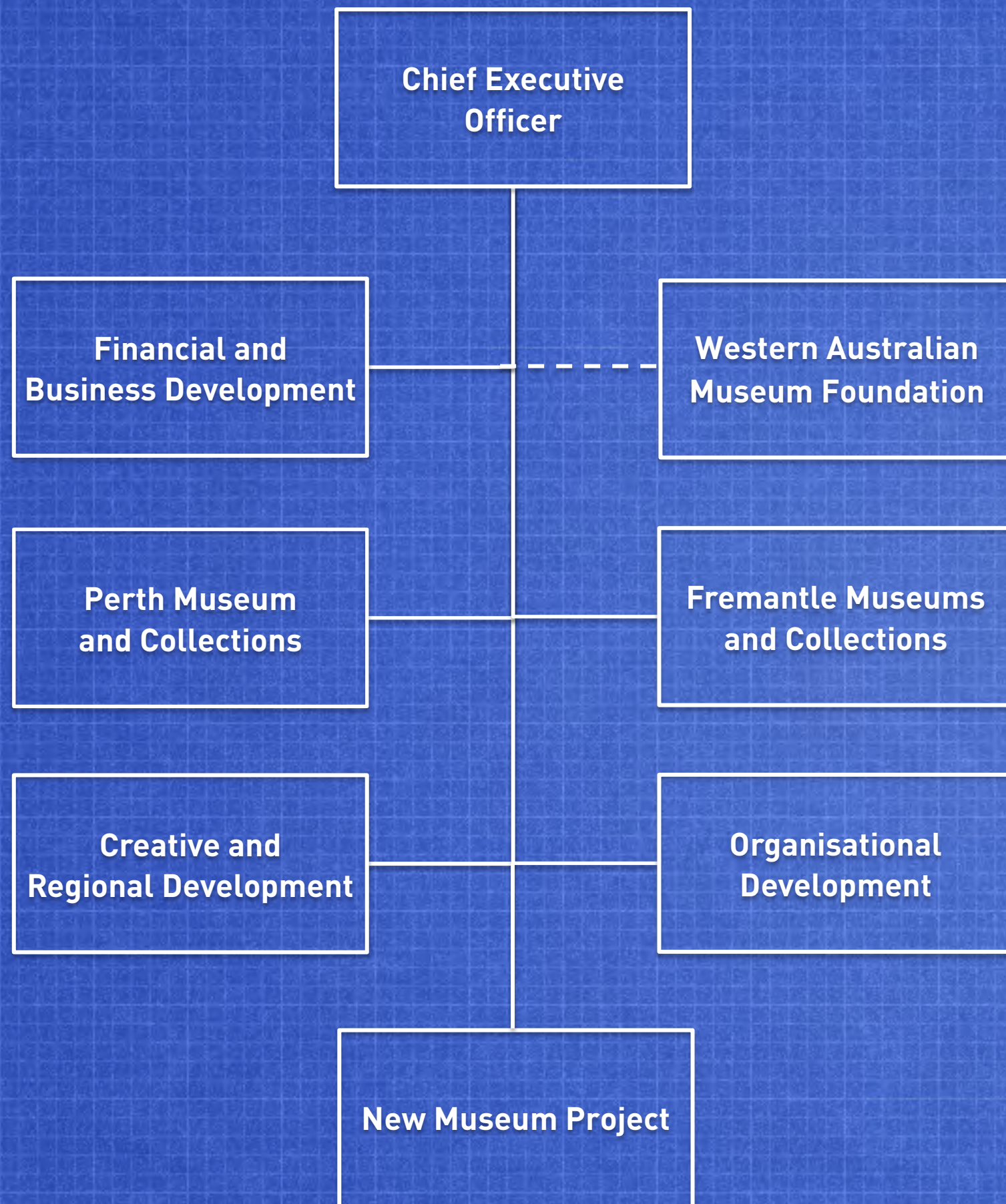
**Accountable** We exist for the benefit of all the people of Western Australia and recognise that we are accountable to them and are custodians of their collections.

**Inspirational, Inclusive and Accessible** We will inspire people to explore our world and will advance knowledge through study, research and life-long learning; making sure that our facilities, programs and resources are accessible to all.

**Enterprising and Excellent** We will be creative, resourceful, imaginative, innovative and entrepreneurial; we will be commercially astute and aspire to excellence in all that we do.

**Sustainable** We aspire to be socially, environmentally and economically sustainable and will work in partnership with others to maximise public benefit and value for money.

We recognise **Aboriginal and Torres Strait Islander peoples as the first peoples of Australia**. We acknowledge the primary rights of Aboriginal and Torres Strait Islander peoples in their cultural heritage and will work collaboratively to advance understanding between all peoples.



## Our organisation

We have five major operational areas within the organisation:

### Perth Museum and Collections

This group consists of the Collections and Research Centre – natural, social and cultural history research and collection management; and the operations of the WA Museum - Perth site.

### Fremantle Museums and Collections

This group consists of maritime heritage research and collection management; materials (object) conservation; and the operations of the Maritime and Shipwreck Museums.

### Creative and Regional Development

This group consists of Creativity and Learning; Exhibition and Design; Museum Development Service; the operations of the Regional Museum sites and reserves.

### Organisational Development

This group consists of Marketing; Communications; Policy and Legal; HR Support; Records Management; Special projects and ATSI advisor.

### Financial and Business Development

This group consists of Commercial Operations and Venue Hire; Facilities management and Corporate Finance.

We also have a **Western Australian Museum Foundation** which is focused on fundraising and is constitutionally independent from the Museum.

The **New Museum Project** team works with these operational areas of the organisation as well as with other stakeholders to plan and deliver the project.



## Our Priorities

The WAM has created its *Strategic Plan 2014-2025* which sets out its strategic priorities for this period and outlines the ways in which it will address them. The priorities are:

### **Sustainable Growth**

Creating an organisation for the future ensuring environmental, financial and social sustainability, and succession planning in our workforce.

### **Heart of the Community**

Establishing the Museum in the hearts and minds of all Western Australians and including them in the creation and sharing of knowledge.

### **Aboriginal and Torres Strait Islander Peoples**

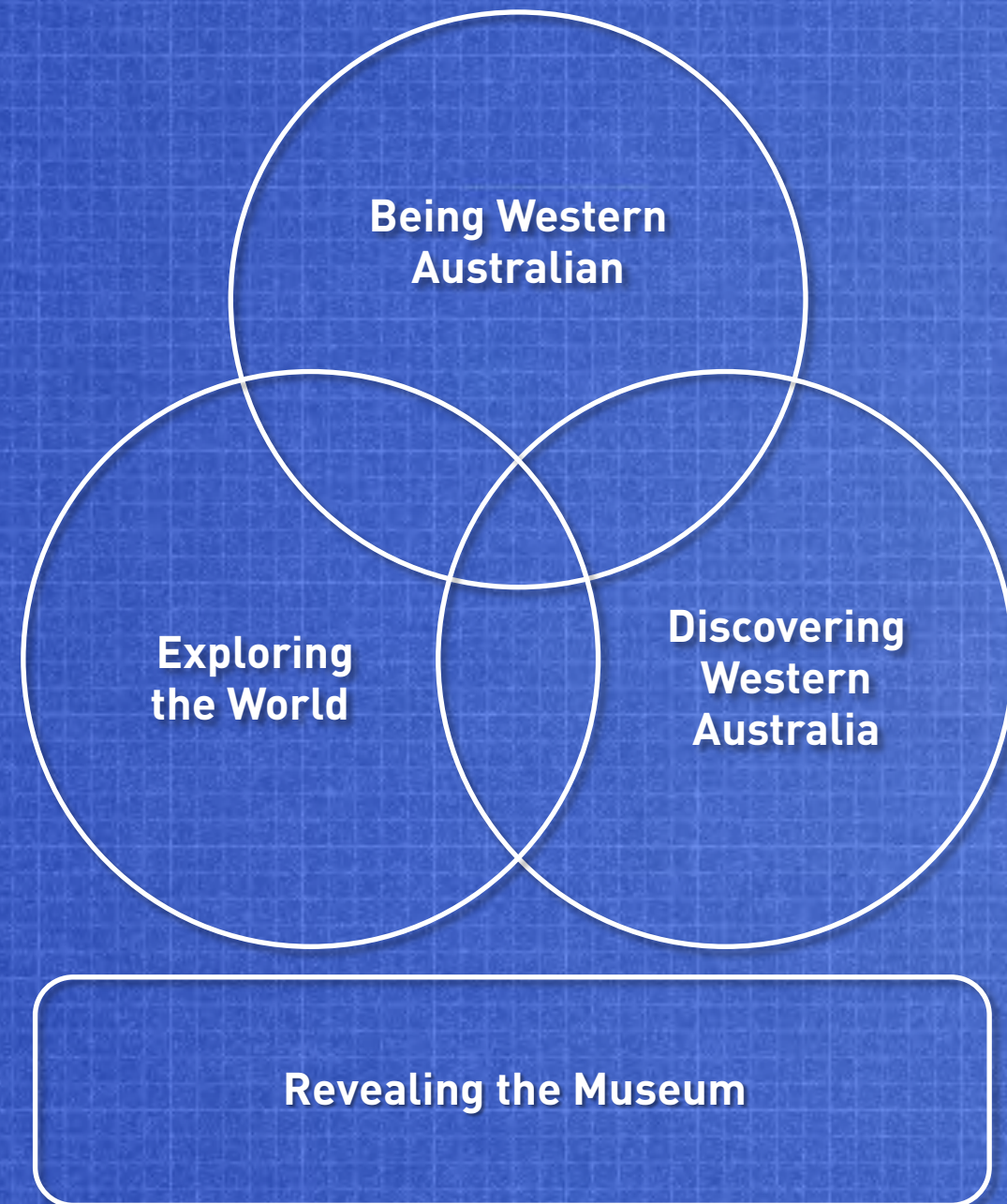
Ensuring meaningful engagement with, and inclusion of, Aboriginal and Torres Strait Island peoples in all that we do.

### **World Leader**

Building an international reputation for collections, research, public engagement and creativity.

### **New Museum Project**

Recognising that the development of the New Museum is the key organisational priority, and ensuring that its development supports the Museum's mission.



## Key priority: A New Museum for WA

In May 2012, the State Government of Western Australia made a significant financial commitment to create a New Museum within the revitalised Perth Cultural Centre.

The New Museum project provides the people of Western Australia with an extraordinary opportunity to create a museum that is at the heart of its community; that is valued and utilised by everyone, and is a destination for all Western Australians as well as visitors to our State.

The New Museum will consist of a new building integrated into the existing heritage buildings on the site which will be refurbished throughout. It will have accessible, animated spaces including:

- A series of new exhibitions which have the following major themes running through them - *Being Western Australian*, *Discovering Western Australia*, and *Exploring the World*;
- Interactive and experiential spaces that connect visitors to our collections and the people that work on that goes on behind the scenes at the Museum that is critical to understanding our planet. These spaces are part of the *Revealing the Museum* thread;
- A major temporary exhibition gallery and smaller temporary exhibition spaces;
- Flexible areas for a wide range of public programs; and
- Function spaces, café and retail services.

The New Museum will provide unprecedented access to the State Collection through engaging and contemporary spaces, better public access, new exhibitions and programs and strong links to the regions.

It will encourage deep engagement by valuing user contributions to its content and spaces.



# Developing the New Museum

The WA Museum works with the Department of Culture and the Arts and Department of Treasury – Strategic Projects and Asset Sales to plan, manage and deliver the New Museum.

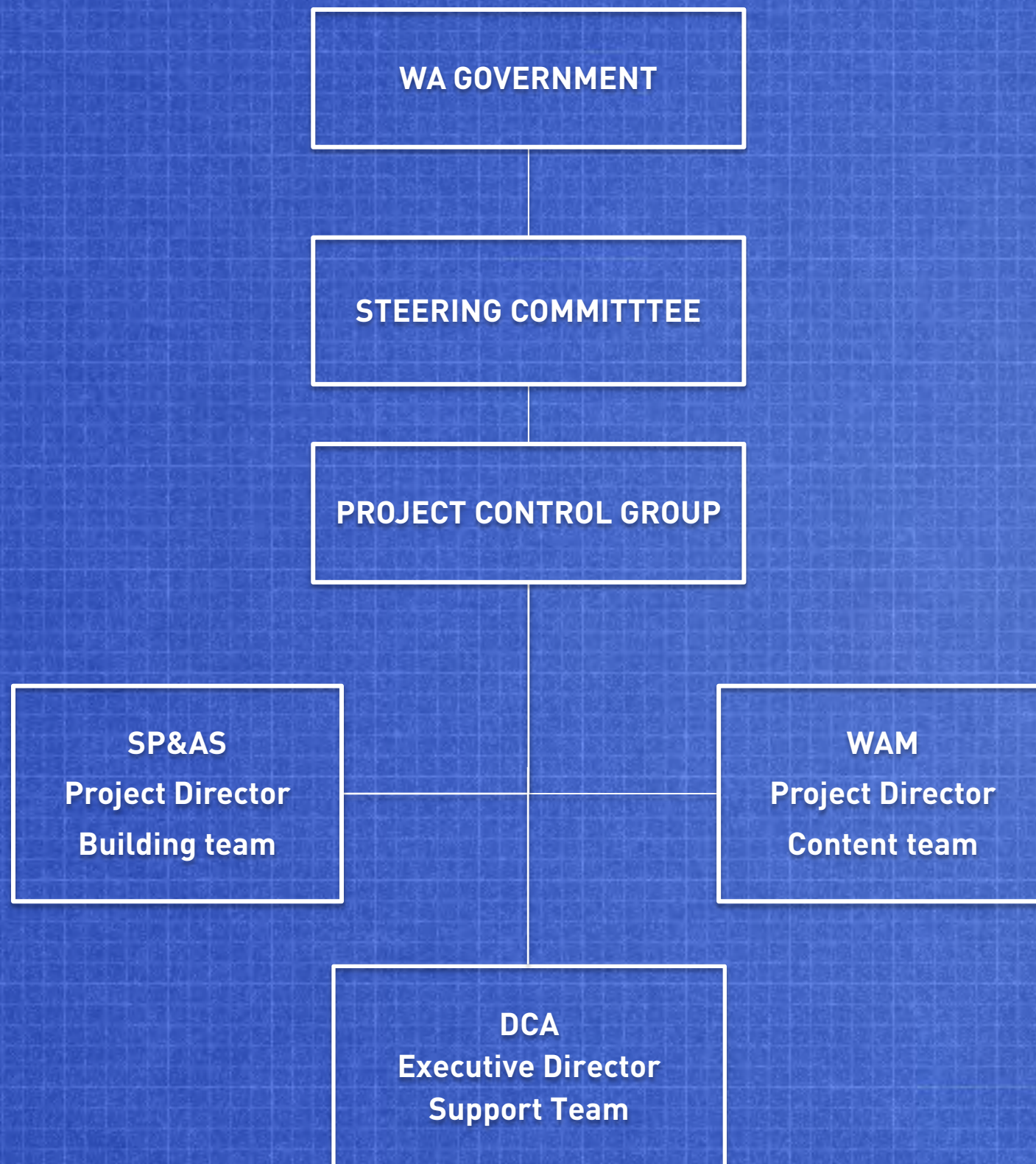
The Steering Committee is chaired by the Director-General of the Department of Culture and the Arts and consists of senior executives of each of above agencies plus other key stakeholders, including the Chair of the Museum Trustees. It has overall accountability for the project. It approves all major plans and resources; and authorises deviations from approved plans within delegated responsibility from government.

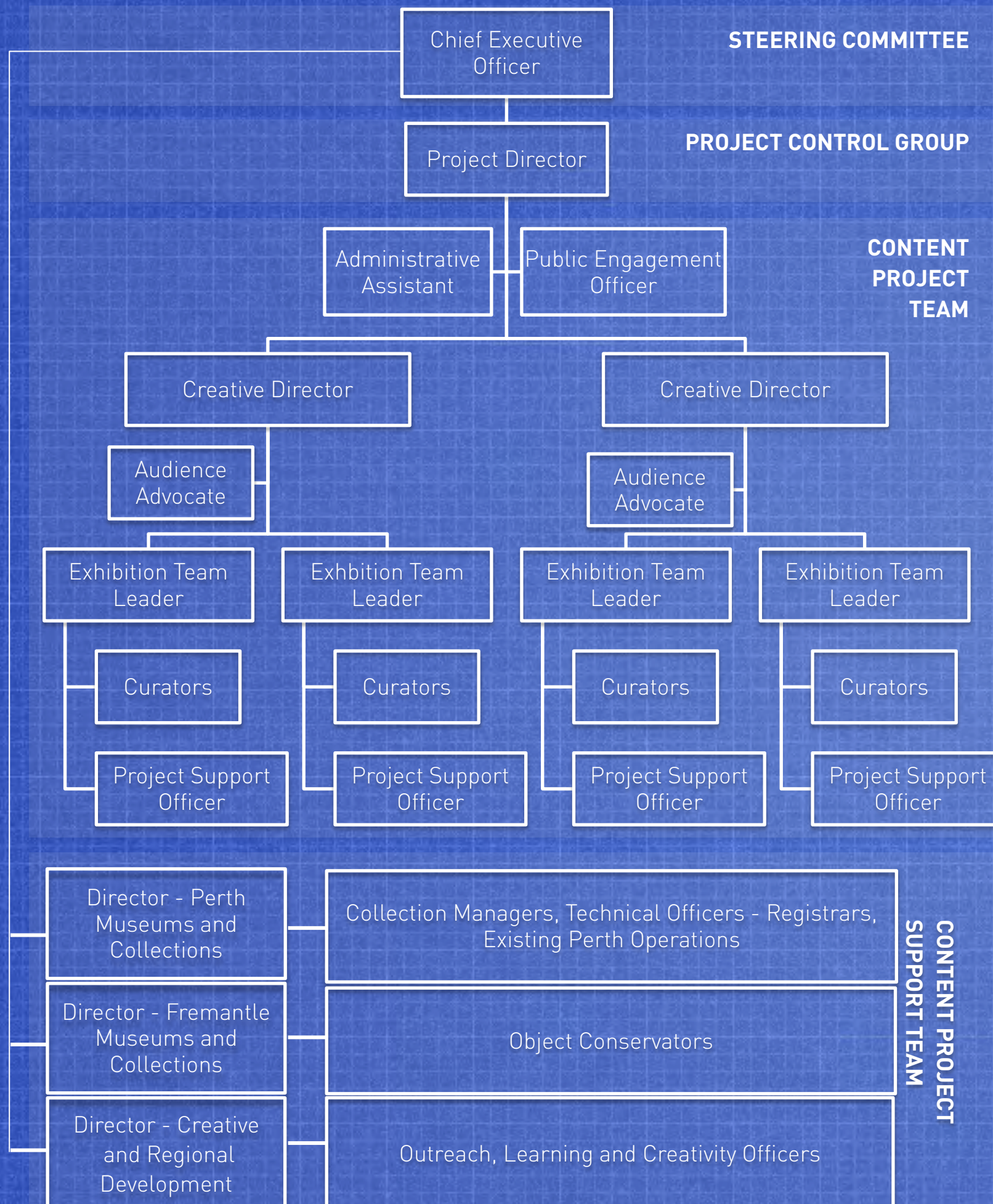
The Project Control Group is chaired by the New Museum Project Director and consists of senior staff of each of the key agencies plus other key stakeholders. It has day-to-day oversight of the project within the constraints set by the Steering Committee. It estimates and prepares plans for approval by the Steering Committee; coordinates resources to implement approved plans; reports on progress and escalates significant issues or recommendations for deviations to plan to the Steering Committee.

The Department of Culture and the Arts is the project champion and reports through the Minister for Culture and the Arts to Government on project progress. It provides support services to the Museum.

The Department of Treasury - Strategic Projects and Asset Sales is responsible for the delivery of the building.

The WA Museum is responsible for the delivery of the content – exhibitions, learning and programming.





## WA Museum Team

This organisation structure shows how the Content Project Team reports through their Creative Directors to the Project Director and the Chief Executive Officer.

It also shows how the different operational areas will support the Content Project team.

Members of the project team and the support team are a mix of newly recruited and existing staff.

While this diagram shows structured reporting lines, team members will work collaboratively with each other, with the support team and other Museum staff; with key agencies and consultants and especially with the community.

Community engagement is at the heart of this project and co-creation of content is a central platform enabling the sharing of stories.



## Timeframe

Activity	Complete by
✓ Demolition of Francis Street building	Dec 2011
✓ Creation of temporary garden on New Museum site	May 2012
✓ Business Case for New Museum	End 2012
✓ Project Definition Plan phase	End 2013
Building Design	2015-16
Exhibition Design	2016-17
Building construction	2018-19
Exhibition production	2018-19
Museum fitout ready for opening	2019-20