

# Attaching Documents when applying for Vacancies via JobsWA (RAMS)

When it comes time to attach your paperwork, ensure you have a soft copy(s) saved to attach with your application.

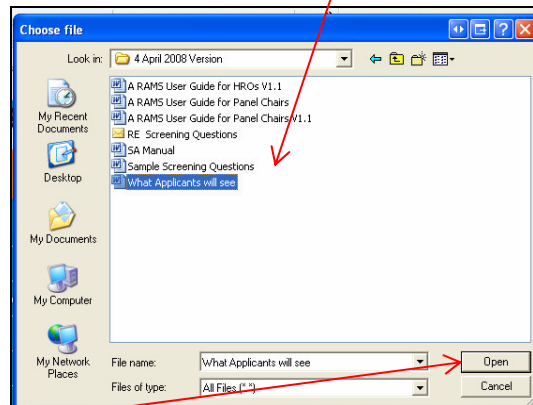
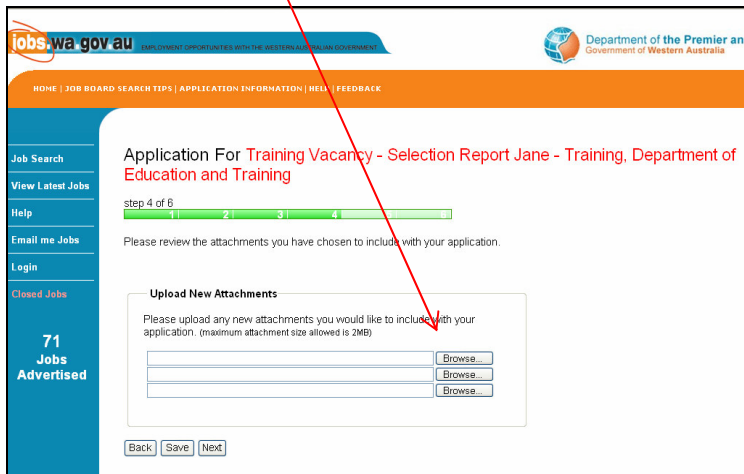
The maximum attachment size is 2MB – PER ATTACHMENT

You can break down your application and save it into parts should it go over the 2MB allowance.

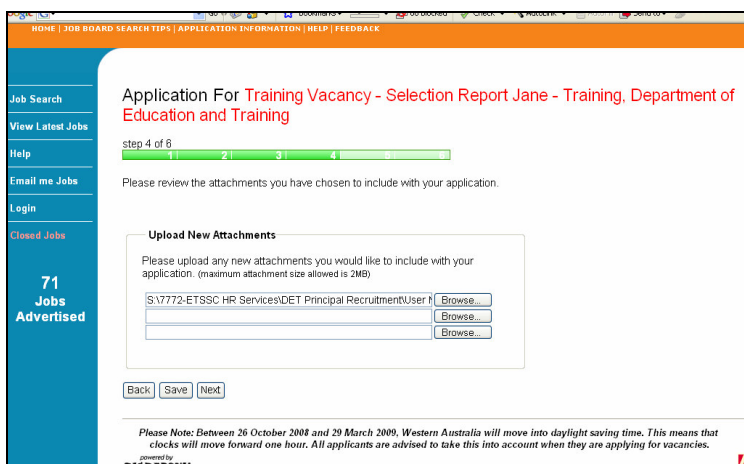
~ ~ ~ ~ ~

Click on 'Browse'

In the 'Choose File' window that appears, navigate to and select your attachment.



Click on 'Open'



Continue the above steps until all files have been attached.

**If you are not able to attach your documentation, please phone the Candidate Management Administrator on (08) 9264 8565**