

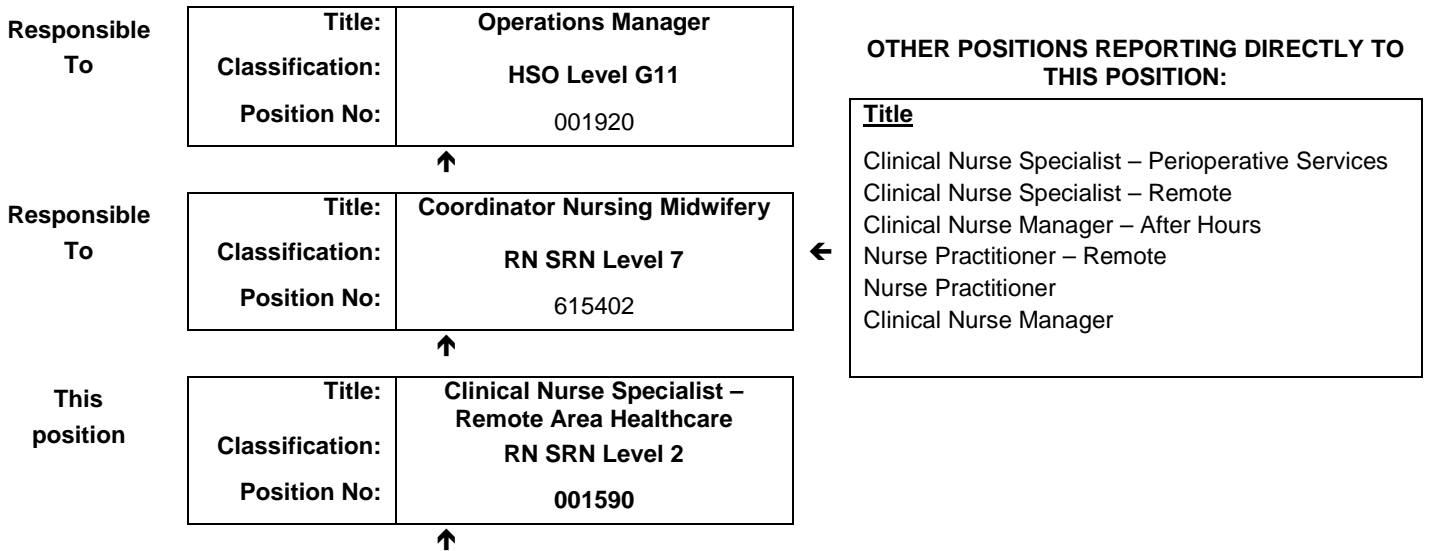


JOB DESCRIPTION FORM

Section 1 – POSITION IDENTIFICATION

WA Country Health Service – Midwest		Position No:	001590
Division:	Gascoyne	Title:	Clinical Nurse Specialist – Remote Area Healthcare
Branch:	Burringurrah Nursing Post	Classification:	RN SRN Level 2
Section:		Award/Agreement	Nurses and Midwives Agreement

Section 2 – POSITION RELATIONSHIPS



OTHER POSITIONS REPORTING DIRECTLY TO THIS POSITION:

Title
Clinical Nurse Specialist – Perioperative Services
Clinical Nurse Specialist – Remote
Clinical Nurse Manager – After Hours
Nurse Practitioner – Remote
Nurse Practitioner
Clinical Nurse Manager

Positions under direct supervision:	← Other positions under control:								
<table border="1"> <thead> <tr> <th>Position No.</th> <th>Title</th> </tr> </thead> <tbody> <tr> <td>001210</td> <td>Senior Aboriginal Health Worker</td> </tr> <tr> <td>001915</td> <td>Cleaner</td> </tr> </tbody> </table>	Position No.	Title	001210	Senior Aboriginal Health Worker	001915	Cleaner	<table border="1"> <thead> <tr> <th>Category</th> <th>Number</th> </tr> </thead> <tbody> </tbody> </table>	Category	Number
Position No.	Title								
001210	Senior Aboriginal Health Worker								
001915	Cleaner								
Category	Number								

Section 3 – KEY RESPONSIBILITIES

Responsible for the provision and coordination of primary health care to the Burringurrah community. Includes the provision of Nursing Services encompassing emergency care, chronic disease management, child health, immunisation, health promotion, and education.

WA Country Health Service
Midwest
13 March 2019
REGISTERED

TITLE	Clinical Nurse Specialist – Remote Area Healthcare	POSITION NO	001590
		CLASSIFICATION	RN SRN Level 2



The WA Country Health Service (WACHS) is the largest country health system in Australia and one of the biggest in the world, providing health services to over half a million people, including over 50,000 Aboriginal people, over a vast two and a half million square kilometres area.

WA Country Health Service hospitals handle almost as many births as the State’s major maternity hospital – and 40% of the State’s emergency presentations. The range of health services provided include acute inpatient and emergency care, population and public health, mental health, Aboriginal health, aged care and includes increasing number of services provided by telehealth video-conferencing.

Our dedicated and committed staff work hard to fulfil our vision of Healthier country communities through partnerships and innovation, to deliver health services that support the health and well-being of individuals and communities in rural and remote Western Australia.

OUR PURPOSE – What we are here to do

WACHS improves country people’s health and well-being through access to quality services and by supporting people to look after their own health.

OUR STRATEGIC DIRECTIONS TO 2018

1. Improving health and the experience of care
2. Valuing consumers, staff and partnerships
3. Governance, performance and sustainable services

OUR GUIDING PRINCIPLES

Consumers first in all we do. Safe, high quality services and information at all times. Care closer to home where safe and viable. Evidence based services, partnerships and collaboration.

OUR VALUES

Community – making a difference through teamwork, cooperation, a ‘can do’ attitude and country hospitality.

Compassion – listening and caring with empathy, respect, courtesy and kindness.

Quality – creating a quality health care experience for every consumer, continual improvement, innovation and learning.

Integrity – accountability, honesty and professional, ethical conduct in all that we do.

Justice – valuing diversity, achieving health equality, cultural respect and a fair share for all.

<p>WA Country Health Service Midwest</p> <p>13 March 2019</p> <p>REGISTERED</p>
--

TITLE	Clinical Nurse Specialist – Remote Area Healthcare	POSITION NO	001590
		CLASSIFICATION	RN SRN Level 2

Section 4 – STATEMENT OF DUTIES

Duty No.	Details	Freq.	%
1.0	CLINICAL		
1.1	Provision of a weekday clinic service to the Burringurah community.		
1.2	Administration of clinical services according to WACHS and Midwest policies and procedures.		
1.3	Provision of emergency care including transport, assessment, treatment and referral.		
1.4	Coordination and organisation of medical evacuations from the community as per RFDS guidelines.		
1.5	Provision of an immunisation service for the community of Burringurah.		
1.6	Provision and facilitation of school and child health services.		
1.7	Coordination of visiting medical clinics and assist visiting Medical Officers.		
1.8	Provision of on call after hour's emergency service.		
2.0	PRIMARY HEALTH CARE		
2.1	Provision of primary health care and health promotion programs in consultation with the Burringurah community and collaboration with the Gascoyne Population Health Unit.		
2.2	Establishment of collaborative relationships with other health and community personnel and stakeholders to ensure a range of quality services responsive to community needs.		
2.3	Development and provision of services including health maintenance, disease prevention and client and community education.		
3.0	ORGANISATIONAL –SUPPORT AND CORPORATE		
3.1	Maintain patient records and data collection in conjunction with t the District Director of Nursing, Gascoyne.		
3.2	Preparation and review of Emergency plans for the Burringurah Nursing post.		
3.3	Ordering and acquittal of pharmacy and medical store supplies.		
3.4	Direct, mentor and support of Aboriginal Health Workers and other clinic staff.		
3.5	Develop and maintain a culture of quality improvement and risk management for the Burringurah Nursing Post according to National EQUIP standards. This includes monitoring of appropriate performance indicators and a program of audit and evaluation planned in conjunction with the District Director of Nursing and Quality Coordinator, Gascoyne.		
3.6	Accountable for the safe, efficient and effective use of resources.		
3.7	Reporting of equipment and building maintenance needs.		
3.8	Participation in operational and strategic planning for the Burringurah Nursing Post.		
3.9	Recruitment and selection of staff under direct control.		
3.10	Actively participate in own performance development planning and conduct performance development and management for employee's under direct control.		
4.0	OTHER		
4.1	Other duties as directed by the District Director of Nursing, Gascoyne.		

The occupant of this position will be expected to comply with and demonstrate a positive commitment to the WACHS values and the highest achievement in demonstrating positive commitment to Equal Employment Opportunity, Occupational Safety & Health, Public Sector Standards, Code of Conduct, Code of Ethics, Quality Improvement, Performance Management, Customer Focus, Disability Services Act and Confidentiality throughout the course of their duties.

WA Country Health Service
Midwest
13 March 2019
REGISTERED

TITLE	Clinical Nurse Specialist – Remote Area Healthcare	POSITION NO	001590
		CLASSIFICATION	RN SRN Level 2

Section 5 – SELECTION CRITERIA

ESSENTIAL

1. Eligible for registration in the category of Registered Nurse by the Nursing and Midwifery Board of Australia.
2. Demonstrated extensive clinical experience including assessment skills, emergency management skills, clinical problem solving and understanding of chronic disease management.
3. Demonstrated knowledge and application of primary health care principles and programs.
4. Demonstrated ability to work independently or as part of a multidisciplinary team.
5. Demonstrated effective interpersonal, verbal and written communication skills including problem solving and negotiation skills.
6. Demonstrated understanding and commitment to cultural safety and Indigenous health issues.
7. Current knowledge of legislative obligations for Equal Opportunity, Disability Services and Occupational Safety and Health, and how these impact on employment and service delivery.
8. Eligible for / or in possession of a current C or C-A Class drivers licence.

DESIRABLE

1. Previous Remote Area Nursing experience.
2. Eligibility for registration as a Midwife with the Nurses and Midwifery Board of Western Australia.
3. Four Wheel Drive certification.
4. Possession of a current Western Australian Immunisation Provider endorsement.

Section 6 – APPOINTMENT FACTORS

Location	Burringurrah	Accommodation	As determined by the WA Country Health Service Policy
Allowances/ Appointment Conditions	Appointment is subject to: <ul style="list-style-type: none"> • Evidence of current registration by the Nurses and Midwifery Board of Australia must be provided prior to commencement • Provision of the minimum identity proofing requirements • Successful Criminal Record Screening clearance • Successful Pre-Employment Health Assessment • Successful WA Health Integrity Check • Successful Working With Children Check • Evidence of a current C or C-A class driver's licence and ability to travel within the region as required Allowances • District allowance; air conditioning subsidy (if applicable); extra one week's leave north of 26° parallel; air travel concession • On-call allowances will be 25% loading in lieu of overtime and call back allowances 		
Specialised equipment operated			

Section 7 – CERTIFICATION

The details contained in this document are an accurate statement of the duties, responsibilities and other requirements of the position.

Signature and Date:
Manager

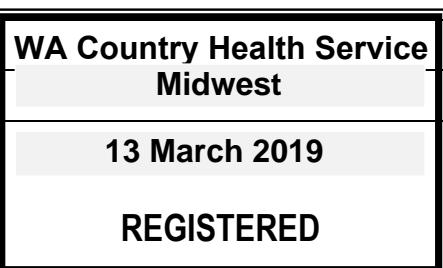


Signature and Date:
Regional Director



As occupant of the position I have noted the statement of duties, responsibilities and other requirements as detailed in this document.

Name	Signature	Date Appointed	Date Signed
WA Country Health Service Midwest			



TITLE	Clinical Nurse Specialist – Remote Area Healthcare	POSITION NO	001590
		CLASSIFICATION	RN SRN Level 2