

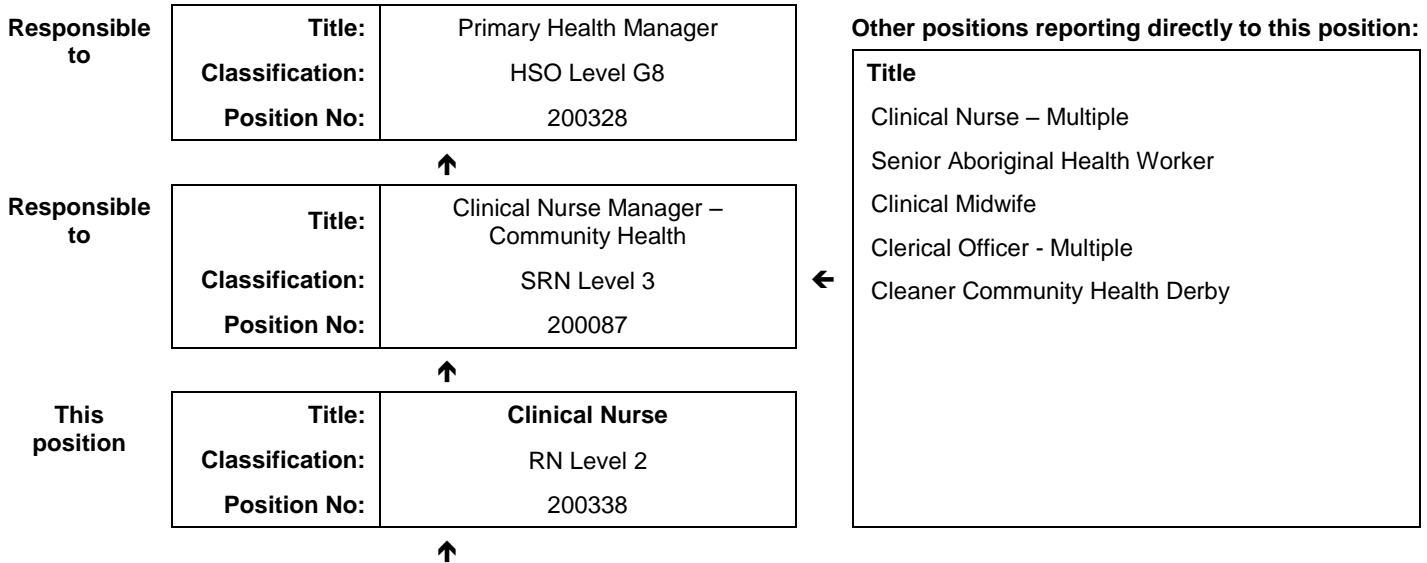


JOB DESCRIPTION FORM

Section 1 - POSITION IDENTIFICATION

		Position No:	200338
Division:	Kimberley	Title:	Clinical Nurse
Branch:	Kimberley Population Health Unit	Classification:	RN Level 2
Section:	Community Health - Derby	Award/Agreement:	Nurses and Midwives Agreement

Section 2 - POSITION RELATIONSHIPS



Positions under direct supervision:	← Other positions under control:				
<table style="width: 100%; border-collapse: collapse;"> <tr> <td style="width: 50%; text-align: center;">Position No</td> <td style="width: 50%; text-align: center;">Title</td> </tr> </table>	Position No	Title	<table style="width: 100%; border-collapse: collapse;"> <tr> <td style="width: 70%; text-align: center;">Category</td> <td style="width: 30%; text-align: center;">Number</td> </tr> </table>	Category	Number
Position No	Title				
Category	Number				

Section 3 - KEY RESPONSIBILITIES

The Clinical Nurse is responsible for providing a high level of Primary Health Care to achieve the optimum state of health for individuals, families and communities. The generalist community nurse contributes to primary health care that is holistic, works in interdisciplinary and inter-sectoral service delivery models and provides health care with a high level of cross cultural capability.

TITLE	Clinical Nurse	POSITION NO	200338
		CLASSIFICATION	RN Level 2



The WA Country Health Service (WACHS) is the largest country health system in Australia and one of the biggest in the world, providing health services to over half a million people, including over 50,000 Aboriginal people, over a vast two and a half million square kilometres area.

WA Country Health Service hospitals handle almost as many births as the State’s major maternity hospital – and 40% of the State’s emergency presentations. The range of health services provided include acute inpatient and emergency care, population and public health, mental health, Aboriginal health, aged care and includes increasing number of services provided by telehealth video-conferencing.

Our dedicated and committed staff work hard to fulfil our vision of Healthier country communities through partnerships and innovation, to deliver health services that support the health and well-being of individuals and communities in rural and remote Western Australia.

OUR PURPOSE – What we are here to do

WACHS improves country people’s health and well-being through access to quality services and by supporting people to look after their own health.

OUR STRATEGIC DIRECTIONS TO 2018

1. Improving the experience of health care.
2. Valuing consumers, staff and partnerships.
3. Governance, performance and sustainable services.

OUR GUIDING PRINCIPLES

- Consumers first in all we do.
- Safe, high quality services and information at all times.
- Care closer to home where safe and viable.
- Evidence based services.
- Partnerships and collaboration.

OUR VALUES

Community – making a difference through teamwork, cooperation, a ‘can do’ attitude and country hospitality.

Compassion – listening and caring with empathy, respect, courtesy and kindness.

Quality – creating a quality health care experience for every consumer, continual improvement, innovation and learning.

Integrity – accountability, honesty and professional, ethical conduct in all that we do.

Justice – valuing diversity, achieving health equality, cultural respect and a fair share for all.

WA Country Health Service

07 February 2019

REGISTERED

TITLE	Clinical Nurse	POSITION NO	200338
		CLASSIFICATION	RN Level 2

Section 4 - STATEMENT OF DUTIES

Duty No	Details	Freq	%
1	CLINICAL		70
1.1	Provides quality primary health care to individuals, families, and the community in general within own competency level, agreed protocols and relevant legislation in order to meet planned health outcomes.		
1.2	Actively reflects on nursing practices and services to enhance evidence based practice and to inform primary health care service development.		
1.3	Supports and promotes a multi-disciplinary approach to service delivery and involves other relevant departments and agencies as appropriate.		
1.4	Supports, develops and implements health initiatives using holistic primary health care principles and a culturally safe community development approach.		
1.5	Works in partnership with the community, Aboriginal health workers, other community health staff, relevant agencies, hospital staff, and visiting specialists to ensure optimal care, and achieve long term sustainable health outcomes for clients.		
1.6	Practices independently at an advanced level of clinical knowledge and skills.		
1.7	Refers clients appropriately for health care.		
1.8	Provides public health services to the population of the Kimberley as required by Kimberley Population Health Unit and the state wide program.		
1.9	Provides quality primary health care to high risk clients / families living in remote locations.		
2	SUPPORT		20
2.1	Maintains quality improvement practices in the provision of nursing services.		
2.2	Develops implements and evaluates health promotion and education programs for clients / community as part of the integrated primary health care service model.		
2.3	Undertakes responsibility for own professional development and competency development and also contributes to the development of peers and students.		
2.4	Participates in relevant peer and professional practice review including identification of ongoing professional development needs with the Clinical Nurse Manager.		
2.5	Maintains data entry and clinical information in accordance with organisational and professional requirements and provides reports as required.		
2.6	Promotes community health services and the profession to clients, within WACHS Kimberley, and the wider community.		
3	CORPORATE		5
3.1	Participates in the development and evaluation of evidence based programs.		
4	OTHER		5
4.1	Other duties as directed by line manager or their delegate.		

The occupant of this position will be expected to comply with and demonstrate a positive commitment to the highest achievement level in Equal Employment Opportunity, Occupational Safety & Health, Public Sector Standards, Code of Conduct, Code of Ethics, Quality Improvement, Performance Management, Customer Focus, Disability Services Act and Confidentiality throughout the course of their duties.

WA Country Health Service

07 February 2019

REGISTERED

TITLE	Clinical Nurse	POSITION NO	200338
		CLASSIFICATION	RN Level 2

Section 5 - SELECTION CRITERIA

ESSENTIAL:

- 1 Eligible for registration in the category of Registered Nurse by the Nursing and Midwifery Board of Australia.
- 2 Demonstrated commitment in the application of primary health care principles and a community development approach to practice.
- 3 Demonstrated understanding of cultural factors and social determinants particularly relating to Aboriginal health.
- 4 Demonstrated ability to function independently and as part of a multidisciplinary, multi sectoral and interagency team.
- 5 Excellent interpersonal, verbal and written communication skills.
- 6 Current C Class drivers Licence and an ability and willingness to travel including overnight stays away from home.

DESIRABLE:

- 1 Current knowledge and commitment to Equal Opportunity in all aspects of employment and service delivery.
- 2 Other relevant qualifications or community health nursing experience, including Immunisation Certificate or willingness to gain same.
- 3 Relevant experience in the use of personal computer software applications.

Section 6 - APPOINTMENT FACTORS

Location	Derby	Accommodation	As per WACHS Kimberley policy
Appointment/ Allowances Conditions	<p>Appointment is subject to:</p> <ul style="list-style-type: none"> • Evidence of current registration by the Nursing and Midwifery Board of Australia must be provided prior to commencement. • This position is subject to a successful Criminal Record Screening and a Working with Children Check. • Completion of a 100 point identification check. • Successful Pre-Placement Health Screening clearance. • Evidence of current C Class driver's Licence. <p>Allowances include:</p> <ul style="list-style-type: none"> • District Allowance as applicable. • Annual Leave Travel Concession as applicable. • Air-conditioning Subsidy as applicable. • Additional week Northwest Leave. 		
Specialised equipment operated			

Section 7 - CERTIFICATION

The details contained in this document are an accurate statement of the duties, responsibilities and other requirements of the position.

Signature and Date: ____/____/____

Signature and Date: ____/____/____

**Director
Kimberley Population Health Unit**

**Regional Director
WACHS Kimberley**

As occupant of the position I have noted the statement of duties, responsibilities and other requirements as detailed in this document.

Name	Signature	Date Appointed	Date Signed

WA Country Health Service

07 February 2019

REGISTERED