

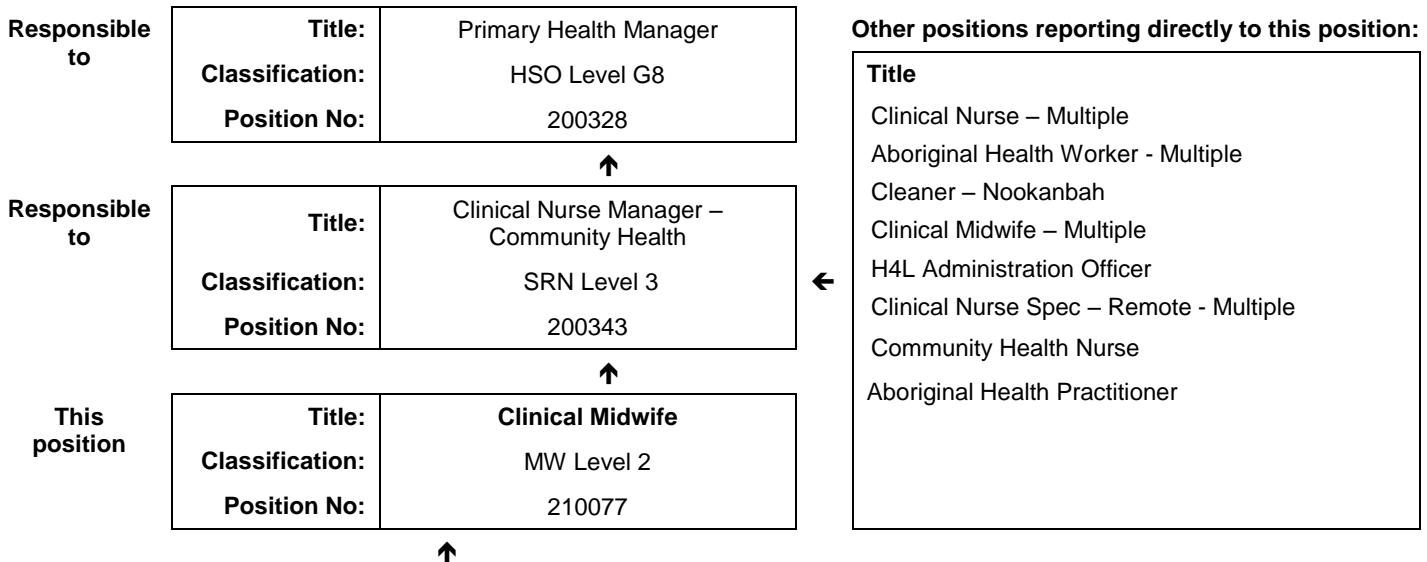


JOB DESCRIPTION FORM

Section 1 - POSITION IDENTIFICATION

		Position No:	210077
Division:	Kimberley	Title:	Clinical Midwife
Branch:	Kimberley Population Health Unit	Classification:	MW Level 2
Section:	Fitzroy Crossing – Community Health	Award/Agreement:	Nurses and Midwives Agreement

Section 2 - POSITION RELATIONSHIPS



Positions under direct supervision:		← Other positions under control:	
Position No	Title	Category	Number

Section 3 - KEY RESPONSIBILITIES

The Community Midwife Generalist is responsible for providing a high level of Primary Health Care to achieve the optimum state of health for individuals, families and communities with emphasis in the area of community midwifery. The Community Midwife Generalist is required to work effectively in a cross cultural setting with Aboriginal children and families.

TITLE	Clinical Midwife	POSITION NO	210077
		CLASSIFICATION	MW Level 2



The WA Country Health Service (WACHS) is the largest country health system in Australia and one of the biggest in the world, providing health services to over half a million people, including over 50,000 Aboriginal people, over a vast two and a half million square kilometres area.

WA Country Health Service hospitals handle almost as many births as the State's major maternity hospital – and 40% of the State's emergency presentations. The range of health services provided include acute inpatient and emergency care, population and public health, mental health, Aboriginal health, aged care and includes increasing number of services provided by telehealth video-conferencing.

Our dedicated and committed staff work hard to fulfil our vision of Healthier country communities through partnerships and innovation, to deliver health services that support the health and well-being of individuals and communities in rural and remote Western Australia.

OUR PURPOSE – What we are here to do

WACHS improves country people's health and well-being through access to quality services and by supporting people to look after their own health.

OUR STRATEGIC DIRECTIONS TO 2018

1. Improving health the experience of care
2. Valuing consumers, staff and partnerships
3. Governance, performance and sustainable services



OUR GUIDING PRINCIPLES

Consumers first in all we do Safe, high quality services and information at all times Care closer to home where safe and viable. Evidence based services

Partnerships and collaboration

OUR VALUES

Community – making a difference through teamwork, cooperation, a 'can do' attitude and country hospitality.

Compassion – listening and caring with empathy, respect, courtesy and kindness.

Quality – creating a quality health care experience for every consumer, continual improvement, innovation and learning.

Integrity – accountability, honesty and professional, ethical conduct in all that we do.

Justice – valuing diversity, achieving health equality, cultural respect and a fair share for all.

TITLE	Clinical Midwife	POSITION NO	210077
		CLASSIFICATION	MW Level 2

WA Country Health Service

18th April 2018

REGISTERED

Section 4 - STATEMENT OF DUTIES

Duty No	Details	Freq	%
1	CLINICAL		70
1.1	Provides quality primary health care to individuals, families, and the community in general within own competency level, agreed protocols and relevant legislation in order to meet planned health outcomes.		
1.2	Actively reflects on midwifery and nursing practices and services to enhance evidence based practice and to inform community midwifery service development.		
1.3	Supports and promotes a multi-disciplinary approach to service delivery and involves other relevant departments and agencies as appropriate.		
1.4	Supports, develops and implements health initiatives using holistic primary health care principles and a culturally safe community development approach.		
1.5	Works in partnership with the community, Aboriginal health workers, other community health staff, relevant agencies, hospital staff, and visiting specialists to ensure optimal care, and achieve long term sustainable health improvements for clients.		
1.6	Practices independently at an advanced level of clinical knowledge and skills as applicable to the role of community midwife.		
1.7	Refers clients appropriately for health care.		
1.8	Provides public health services to the community of interest as required by Kimberley Population Health Unit and the applicable state wide program.		
1.9	Provides quality primary health care to high risk clients / families living in remote locations.		
2	SUPPORT		20
2.1	Maintains quality improvement practices in the provision of nursing and midwifery services.		
2.2	In consultation with the health promotion team, develops, implements and evaluates health promotion activities and education programs for clients / community as applicable in the community midwife role.		
2.3	Contributes to support of nursing/midwife students, work experience students and volunteers.		
2.4	Participates in relevant peer and professional practice review including identification of ongoing professional development needs with the Clinical Nurse Manager.		
2.5	Maintains data entry and clinical information in accordance with organisational and professional requirements and maintains accurate and appropriate documentation.		
2.6	Promotes community health services and the midwifery profession to clients, within WACHS Kimberley, and the wider community.		
3	CORPORATE		5
3.1	Participates in the development and evaluation of evidence based program		
4	OTHER		5
4.1	Other duties as directed by line manager or their delegate.		

The occupant of this position will be expected to comply with and demonstrate a positive commitment to the highest achievement level in Equal Employment Opportunity, Occupational Safety & Health, Public Sector Standards, Code of Conduct, Code of Ethics, Quality Improvement, Performance Management, Customer Focus, Disability Services Act and Confidentiality throughout the course of their duties.

TITLE	Clinical Midwife	POSITION NO	210077
		CLASSIFICATION	MW Level 2

Section 5 - SELECTION CRITERIA

ESSENTIAL:

- 1 Eligible for registration in the category of Midwife by the Nursing and Midwifery Board of Australia.
- 2 Demonstrated commitment in the application of primary health care principles and a community development approach to practice.
- 3 Demonstrated understanding of cultural factors and social determinants particularly relating to Aboriginal health.
- 4 Demonstrated ability to function independently and as part of a multidisciplinary, multi sectoral and interagency team.
- 5 Excellent interpersonal, verbal and written communication skills including via the use of computer programs.
- 6 Current C Class drivers Licence and an ability and willingness to travel including overnight stays away from home.

DESIRABLE:

- 1 Current knowledge and commitment to Equal Opportunity in all aspects of employment and service delivery.
- 2 Other relevant qualifications or Community Health nursing experience, including Immunisation Certificate or willingness to gain same.

Section 6 - APPOINTMENT FACTORS

Location	Fitzroy Crossing	Accommodation	As per WACHS Kimberley policy
Appointment/ Allowances Conditions	<p>Appointment is subject to:</p> <ul style="list-style-type: none"> • Evidence of current registration by the Nursing and Midwifery Board of Australia must be provided prior to commencement • This position is subject to a successful Criminal Record Screening and a Working with Children Check • Completion of a 100 point identification check • Successful Pre-Placement Health Screening clearance • Evidence of current C Class driver's Licence <p>Allowances include:</p> <ul style="list-style-type: none"> • District Allowance as applicable • Annual Leave Travel Concession as applicable • Air-conditioning Subsidy as applicable • Additional week Northwest Leave 		
Specialised equipment operated			

Section 7 - CERTIFICATION

The details contained in this document are an accurate statement of the duties, responsibilities and other requirements of the position.



Signature and Date: ____/____/____

**Director
Kimberley Population Health Unit**

Signature and Date: ____/____/____

**Regional Director
WACHS Kimberley**

As occupant of the position I have noted the statement of duties, responsibilities and other requirements as detailed in this document.

Name	Signature	Date Appointed	Date Signed