

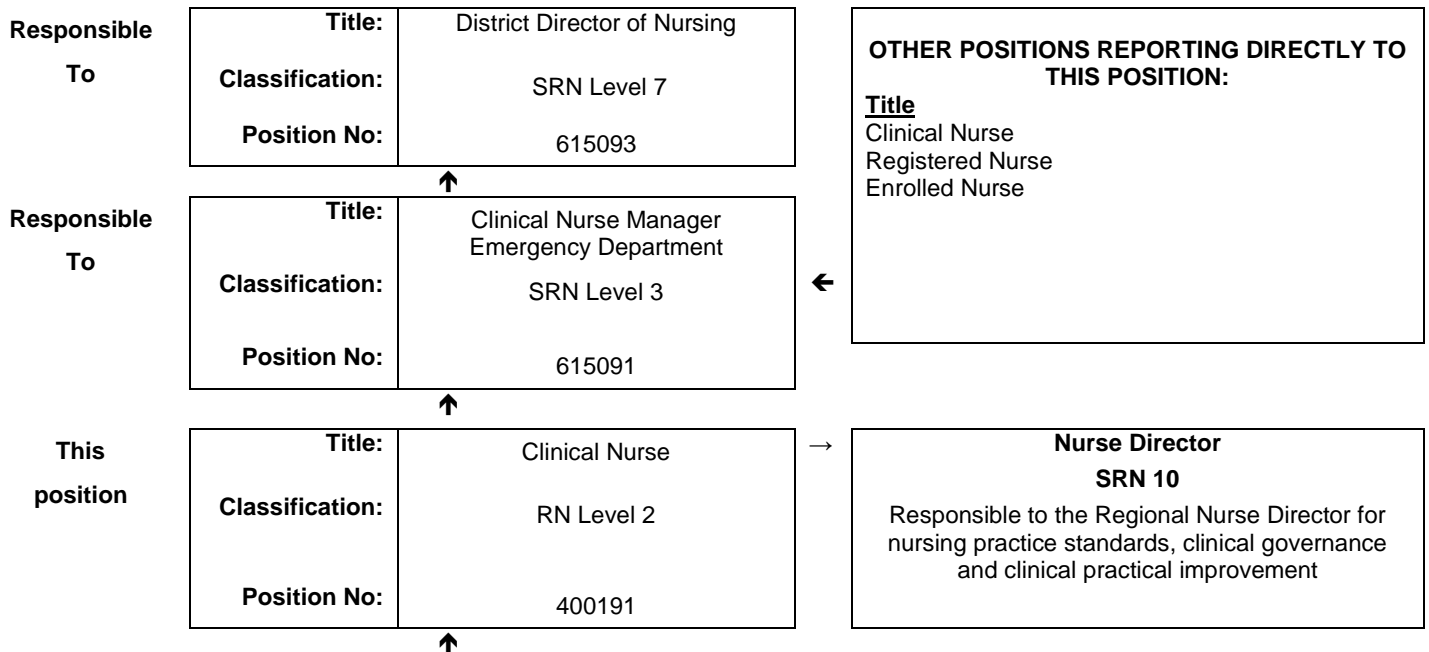


## JOB DESCRIPTION FORM

### Section 1 – POSITION IDENTIFICATION

<b>WA Country Health Service</b>		<b>Position No:</b>	400191
<b>Division:</b>	WACHS -Pilbara	<b>Title:</b>	Clinical Nurse
<b>Branch:</b>	Nursing Services	<b>Classification:</b>	RN Level 2
<b>Section:</b>	Nickol Bay Hospital	<b>Award/Agreement</b>	Nurses and Midwives Agreement

### Section 2 – POSITION RELATIONSHIPS



<b>Positions under direct supervision:</b>	<b>← Other positions under control:</b>								
<table border="1"> <thead> <tr> <th>Position No.</th> <th>Title</th> </tr> </thead> <tbody> <tr> <td> </td> <td> </td> </tr> </tbody> </table>	Position No.	Title			<table border="1"> <thead> <tr> <th>Category</th> <th>Number</th> </tr> </thead> <tbody> <tr> <td> </td> <td> </td> </tr> </tbody> </table>	Category	Number		
Position No.	Title								
Category	Number								

### Section 3 – KEY RESPONSIBILITIES

The primary responsibility of the Clinical Nurse is to manage, coordinate and deliver comprehensive evidenced based nursing care for patients of the Emergency Department, using leadership and advanced nursing skills and knowledge relevant to the practice setting of the Emergency Department.

**WA Country Health  
Service- Pilbara**

**13<sup>th</sup> April 2017**

**REGISTERED**

TITLE	Clinical Nurse	POSITION NO	400191
		CLASSIFICATION	RN Level 2



The WA Country Health Service (WACHS) is the largest country health system in Australia and one of the biggest in the world, providing health services to approximately half a million people, including 45,000 Aboriginal people, over a vast two and a half million square kilometres area.

WA Country Health Service hospitals handle as many births as the State's major maternity hospital – and as many emergency presentations as Perth metropolitan hospitals combined. The range of health services provided cover population health, mental health, Aboriginal health and aged care.

Our dedicated and committed staff work hard to fulfil our purpose *Working together for a healthier country WA*, to deliver health services that support the health and well-being of individuals and communities in rural and remote Western Australia.

**OUR PURPOSE**

To improve, promote and protect the health of country Western Australians.

**WHAT WE STAND FOR**

**Quality health services for all.**

**Improving the health of Aboriginal people and those most in need.**

**A fair share for country health.**

**Supporting our team – workforce excellence and stability.**

**OUR VALUES**

***Community*** – making a difference through teamwork, generosity and country hospitality.

***Compassion*** – listening and caring with empathy and dignity.

***Quality*** – creating a quality health care experience for every consumer.

***Integrity*** – accountability, honesty and professional, ethical conduct in all that we do.

***Justice*** – valuing diversity with a fair share for all.

**WA Country Health Service- Pilbara**

**13<sup>th</sup> April 2017**

**REGISTERED**

<b>TITLE</b>	<b>Clinical Nurse</b>	<b>POSITION NO</b>	400191
		<b>CLASSIFICATION</b>	RN Level 2

#### Section 4 – STATEMENT OF DUTIES

<b>Duty No.</b>	<b>Details</b>	<b>Freq.</b>	<b>%</b>
	<p>The Clinical Nurse will:</p> <ol style="list-style-type: none"> <li>1. Maintains national competence for Registered Nurses to practice in accordance with the Nurses and Midwifery Board of Australia.</li> <li>2. Responsible and accountable for patient safety and quality of care through planning, coordination, performing, facilitating and evaluating the delivery of patient care in the practice setting on a shift by shift basis</li> <li>3. Maintain advanced skills and competence in the provision of patient assessment, planning, implementation and evaluation of delivery of care, within the practice setting.</li> <li>4. On a shift by shift basis monitors, reviews and reports upon the standard of nursing practice to ensure that colleagues are working within the scope of nursing practice, following appropriate clinical pathways, policies, procedures and adopting a risk management, customer focused approach in patient care delivery</li> <li>5. Coordinates the operational management of the unit, on a shift-by-shift basis and is responsible for the clinical supervision of nurses at Level 1 and/or Enrolled Nurses/ Assistants in Nursing under their supervision.</li> <li>6. Assists the nursing manager with forward resource planning and implementation of management strategies, particularly monitoring industrial workload indicators.</li> <li>7. Performs a leadership role in multi-disciplinary services to ensure a high standard of customer focused health care delivery.</li> <li>8. Fulfils National governing Safety and Quality Health Service Standards requirements including but not limited to: <ol style="list-style-type: none"> <li>a. Participating in continuous safety and quality improvement actions, such as audits, reviews and drills that result in improvements to patient care, staff knowledge or the consumers experience and that align with actions described within the standard</li> <li>b. Participating with the development, implementation, reporting and monitoring of quality assurance measures and activities</li> <li>c. Ensuring records and statistics are kept in accordance with established procedures</li> <li>d. Undertaking annual performance development review</li> </ol> </li> <li>9. Identifies patient education needs and implements appropriate teaching, including coordination of patient education programs.</li> <li>10. Facilitates others in their development of competencies and organisational skills including performance management of designated nursing personnel.</li> <li>11. Be accountable for the safe, efficient and effective use of resources.</li> <li>12. Responsible for unit based education and training in relation to clinical practice, accepting responsibility and accountability for designated portfolios.</li> <li>13. Participates in the on-call roster as required.</li> </ol> <p>Other duties as requested by the line manager.</p>		100

The occupant of this position will be expected to comply with and demonstrate a positive commitment to the highest achievement level in Equal Employment Opportunity, Occupational Safety & Health, Public Sector Standards, Code of Conduct, Code of Ethics, Quality Improvement, Performance Management, Customer Focus, Disability Services Act and Confidentiality throughout the course of their duties.

**WA Country Health  
Service- Pilbara**

**13<sup>th</sup> April 2017**

**REGISTERED**

<b>TITLE</b>	<b>Clinical Nurse</b>	<b>POSITION NO</b>	400191
		<b>CLASSIFICATION</b>	RN Level 2

**Section 5 – SELECTION CRITERIA**

**ESSENTIAL**

1. Eligible for registration in the category of Registered Nurse by the Nursing and Midwifery Board of Australia.
2. Demonstrated advanced clinical knowledge and experience in the delivery of evidenced based nursing care within the relevant practice setting.
3. Demonstrated advanced skills in planning, coordination and decision making, within the relevant practice setting.
4. Demonstrated well-developed team leadership and membership skills.
5. Demonstrated high level communication (written and verbal) and interpersonal skills including negotiation and conflict resolution skills.
6. Demonstrates incorporation of quality and risk management principles within practice.
7. Current knowledge of legislative obligations for Equal Opportunity, Disability Services and Occupational Safety and Health, and how these impact on employment and service delivery.
8. Demonstrated understanding and application of the Aboriginal cultural respect framework.
9. Demonstrated computer skills.

**DESIRABLE**

1. Possession of or progression towards an appropriate post-graduate qualification
2. Knowledge of current health issues and the organisational culture of rural health services.

**Section 6 – APPOINTMENT FACTORS**

<b>Location</b>	Karratha	<b>Accommodation</b>	As determined by the WA Country Health Service Policy
<b>Allowances/ Appointment Conditions</b>	Appointment is subject to: <ul style="list-style-type: none"> <li>• Evidence of current registration by the Nursing and Midwifery Board of Australia must be provided prior to commencement.</li> <li>• Completion of a 100 point identification check</li> <li>• Successful Criminal Record Screening clearance</li> <li>• Evidence of current Working with Children check</li> <li>• Successful Pre- Placement Health Screening clearance</li> <li>• Ability to travel within the region</li> </ul>		
<b>Specialised equipment operated</b>	Clinical equipment relevant to the practice area		

**Section 7 – CERTIFICATION**

The details contained in this document are an accurate statement of the duties, responsibilities and other requirements of the position.

**WA Country Health  
Service- Pilbara**  
  
 13<sup>th</sup> April 2017  
  
**REGISTERED**

Signature and Date:  
**Regional Nurse Director**

**WA Country Health  
Service- Pilbara**  
  
 13<sup>th</sup> April 2017  
  
**REGISTERED**

Signature and Date:  
**Regional Director**

As occupant of the position I have noted the statement of duties, responsibilities and other requirements as detailed in this document.

Name	Signature	Date Appointed	Date Signed

**WA Country Health  
Service- Pilbara**  
  
 13<sup>th</sup> April 2017  
  
**REGISTERED**