

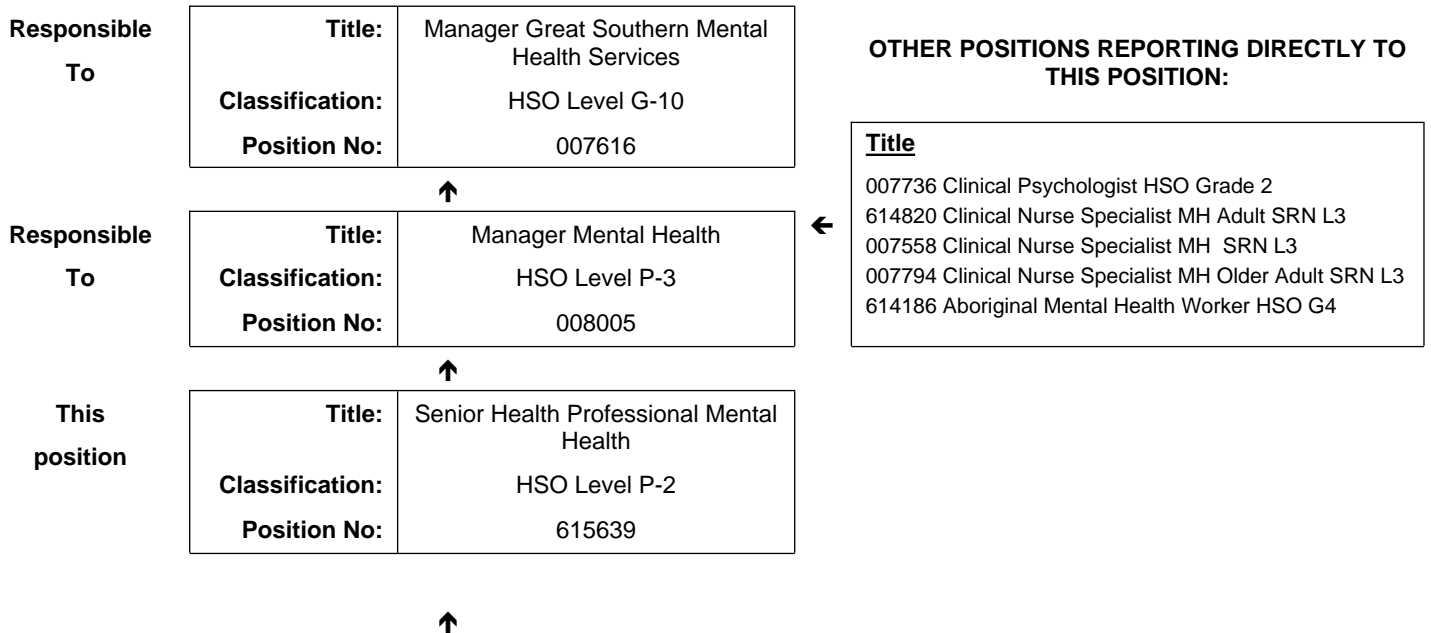


JOB DESCRIPTION FORM

Section 1 – POSITION IDENTIFICATION

GREAT SOUTHERN		Position No:	615639
Division:	Great Southern Mental Health Service	Title:	Senior Health Professional Mental Health
Branch:	Lower Great Southern	Classification:	HSO Level P-2
Section:	Older Adult	Award/Agreement	Health Salaried Officers Agreement

Section 2 – POSITION RELATIONSHIPS



Positions under direct supervision:	← Other positions under control:								
<table border="1"> <thead> <tr> <th>Position No.</th> <th>Title</th> </tr> </thead> <tbody> <tr> <td> </td> <td> </td> </tr> </tbody> </table>	Position No.	Title			<table border="1"> <thead> <tr> <th>Category</th> <th>Number</th> </tr> </thead> <tbody> <tr> <td> </td> <td> </td> </tr> </tbody> </table>	Category	Number		
Position No.	Title								
Category	Number								

Section 3 – KEY RESPONSIBILITIES

Acts as part of a community-based Seniors (Older Adult) Mental Health clinical service. Provides advanced clinical practice in the delivery of services to the target group, including assessment, counselling, therapy and case management.

<p>WA Country Health Service – Great Southern</p> <p>28 November 2017</p> <p>REGISTERED</p>
--

TITLE	Senior Health Professional Mental Health	POSITION NO	615639
		CLASSIFICATION	HSO Level P-2



The WA Country Health Service (WACHS) is the largest country health system in Australia and one of the biggest in the world, providing health services to over half a million people, including over 50,000 Aboriginal people, over a vast two and a half million square kilometres area.

WA Country Health Service hospitals handle almost as many births as the State's major maternity hospital – and 40% of the State's emergency presentations. The range of health services provided include acute inpatient and emergency care, population and public health, mental health, Aboriginal health, aged care and includes increasing number of services provided by telehealth video-conferencing.

Our dedicated and committed staff work hard to fulfil our vision of Healthier country communities through partnerships and innovation, to deliver health services that support the health and well-being of individuals and communities in rural and remote Western Australia.

OUR PURPOSE – What we are here to do

WACHS improves country people's health and well-being through access to quality services and by supporting people to look after their own health.

OUR STRATEGIC DIRECTIONS TO 2018

1. Improving health the experience of care
2. Valuing consumers, staff and partnerships
3. Governance, performance and sustainable services

OUR GUIDING PRINCIPLES

Consumers first in all we do Safe, high quality services and information at all times Care closer to home where safe and viable. Evidence based services

Partnerships and collaboration

OUR VALUES

Community – making a difference through teamwork, cooperation, a 'can do' attitude and country hospitality.

Compassion – listening and caring with empathy, respect, courtesy and kindness.

Quality – creating a quality health care experience for every consumer, continual improvement, innovation and learning.

Integrity – accountability, honesty and professional, ethical conduct in all that we do.

Justice – valuing diversity, achieving health equality, cultural respect and a fair share for all.

<p>WA Country Health Service – Great Southern</p> <p>28 November 2017 Effective date of document</p> <p>November 2017 REGISTERED</p>

TITLE	Senior Health Professional Mental Health	POSITION NO	615639
		CLASSIFICATION	HSO Level P-2

Section 4 – STATEMENT OF DUTIES

Duty No.	Details	Freq.	%
1	CLINICAL	D	70
1.1	Provides a mental health service, utilising a range of interventions, for the service target group in consultation with the multidisciplinary team and in accordance with the Mental Health Act.		
1.2	Acts as the case manager for cases allocated.		
1.3	Actively participates in interdisciplinary and interagency case conferences and meetings.		
1.4	Provides consultations for team members and staff from the Great Southern Mental Health Service and other agencies and organisations regarding care and management of referred clients.		
1.5	Liaises with government and non-government agencies on professional and social issues.		
1.6	Provides support and advocacy for consumers of the Great Southern Mental Health Service.		
1.7	Participates as part of an integrated, multidisciplinary service, in professional development activities as required.		
2	MANAGEMENT/ADMINISTRATION	R	20
2.1	Maintains adequate records and collates statistical data in accordance with the requirements of the Great Southern Mental Health Service.		
2.2	Participates in the planning, development and evaluation of the broader Mental Health Service as required.		
2.3	Completes statistical data as required by the Mental Health Service, including PSOLIS and NOCC requirements.		
2.4	Contributes to and maintains quality management systems that ensure the Service operates with an emphasis on the provision of highest quality care to clients, families and the community.		
3	EDUCATION AND RESEARCH	R	5
3.1	Undertakes continuing professional development.		
3.2	Contributes to the professional development of staff within the Health Services.		
3.3	Participates in community education in matters of mental health.		
4	OTHER	O	5
4.1	Carries out other duties as directed.		
	The incumbent of this position will be expected to comply with and demonstrate a positive commitment to the highest achievement level in Equal Employment Opportunity, Occupational Safety & Health, Public Sector Standards, Code of Ethics, Code of Conduct, Quality Improvement, Performance Management, Customer Focus Disability Services Act and Confidentiality		



TITLE	Senior Health Professional Mental Health	POSITION NO	615639
		CLASSIFICATION	HSO Level P-2

Section 5 – SELECTION CRITERIA

ESSENTIAL

1. Tertiary qualification Occupational Therapy, Psychology or Nursing and eligible for registration by the relevant Board, OR tertiary qualifications in Social Work and eligible for full membership of the Australian Association of Social Workers or the Society of Professional Social Workers
2. Extensive knowledge of mental health disorders and demonstrated clinical practice in mental health with adults
3. Demonstrated understanding of and experience with clinical theory and issues in the treatment of adults with psychological and psychiatric disorders, in particular knowledge related to risk and mental state assessment and the treatment of psychosis, anxiety, depression, suicide and self-harming behaviour
4. Demonstrated understanding of the current Mental Health Act and National Mental Health Standards
5. Demonstrated written and interpersonal skills, including the ability to work as part of a multidisciplinary team
6. Demonstrated computer skills to enable management of medical and patient records, navigation of online policy access, internal communication and completing of online learning resources
7. Current knowledge of legislation obligations for Equal Opportunity, Disability Services and Occupational Safety and Health, and how these impact on employment and service delivery
8. Current 'C' class driver's licence

DESIRABLE

1. Understanding of the issues around providing Mental Health services with a rural community, including provision of culturally appropriate services to indigenous families and communities
2. Demonstrated capability in data collection and program evaluation

Section 6 – APPOINTMENT FACTORS

Location	Albany	Accommodation	As determined by the WA Country Health Service Policy
Allowances/ Appointment Conditions	Appointment is subject to: <ul style="list-style-type: none"> • Evidence of current registration with the appropriate Board, or eligibility for or current full membership of the Australian Association of Social Workers or the Society of Professional Social Workers must be provided prior to commencement. • Completion of a 100 point identification check • Successful Criminal Record Screening clearance and Working with Children (WWC) check • Successful Pre- Placement Health Screening clearance • Current 'C' class driver's licence and ability to travel throughout the region 		
Specialised equipment operated			

Section 7 – CERTIFICATION

The details contained in this document are an accurate statement of the duties, responsibilities and other requirements of the position.

Signature and Date: ____/____/____
Manager

Signature and Date: ____/____/____
Regional Director



As occupant of the position I have noted the statement of duties, responsibilities and other requirements as detailed in this document.

Name	Signature	Date Appointed	Date Signed

