

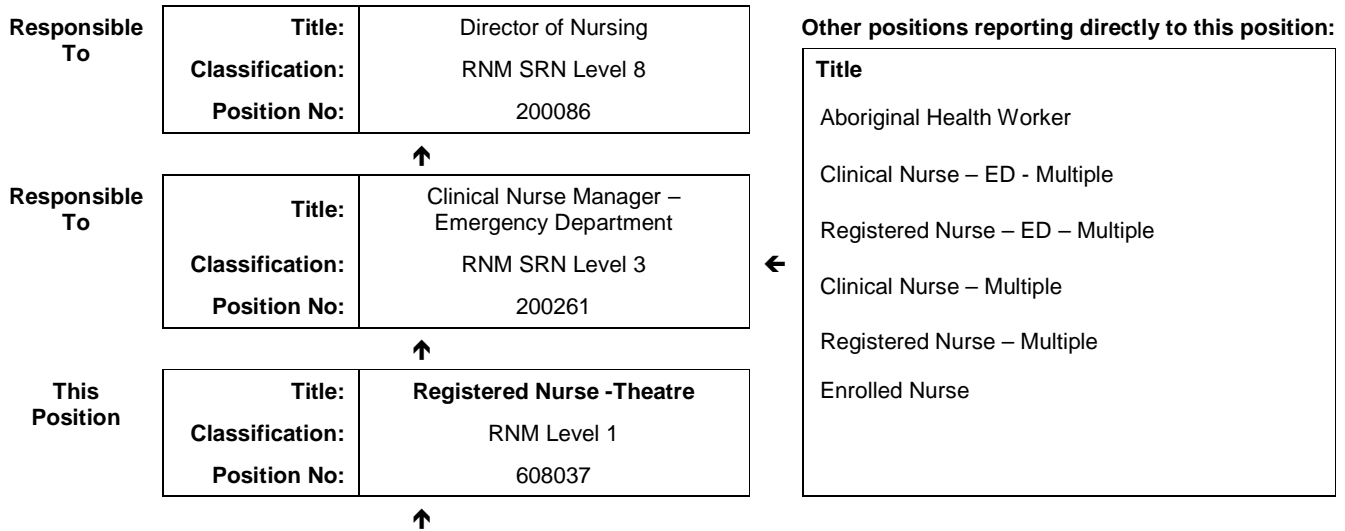


JOB DESCRIPTION FORM

Section 1 - POSITION IDENTIFICATION

		Position No:	608037
Division:	Kimberley	Title:	Registered Nurse - Theatre
Branch:	Derby & Fitzroy Valley Health Services (DFVHS)	Classification:	RNM Level 1
Section:	Nursing Services	Award/Agreement:	Nurses and Midwives Agreement

Section 2 - POSITION RELATIONSHIPS



Positions under direct supervision:		← Other positions under control:	
Position No	Title	Category	Number

Section 3 - KEY RESPONSIBILITIES

To provide nursing care for patients attending theatre within the scope of practice of a Registered Nurse. Assists in the planning and facilitates the unit nursing activities in collaboration with Clinical Nurses. Acts as a clinical resource for other Registered Nurses, Enrolled Nurses, Graduate nurses, Assistants in Nursing and Student Nurses.

TITLE	Registered Nurse - Theatre	POSITION NO	608037
		CLASSIFICATION	RNM Level 1



The WA Country Health Service (WACHS) is the largest country health system in Australia and one of the biggest in the world, providing health services to approximately half a million people, including 45,000 Aboriginal people, over a vast two and a half million square kilometres area.

WA Country Health Service hospitals handle as many births as the State's major maternity hospital – and as many emergency presentations as Perth metropolitan hospitals combined. The range of health services provided cover population health, mental health, Aboriginal health and aged care.

Our dedicated and committed staff work hard to fulfil our purpose *Working together for a healthier country WA*, to deliver health services that support the health and well-being of individuals and communities in rural and remote Western Australia.

OUR PURPOSE

To improve, promote and protect the health of country Western Australians.

WHAT WE STAND FOR

Quality health services for all.

Improving the health of Aboriginal people and those most in need.

A fair share for country health.

Supporting our team – workforce excellence and stability.

OUR VALUES

Community – making a difference through teamwork, generosity and country hospitality.

Compassion – listening and caring with empathy and dignity.

Quality – creating a quality health care experience for every consumer.

Integrity – accountability, honesty and professional, ethical conduct in all that we do.

Justice – valuing diversity with a fair share for all.

WA Country Health Service
26 October 2015
REGISTERED

TITLE	Registered Nurse - Theatre	POSITION NO	608037
		CLASSIFICATION	RNM Level 1

Section 4 - STATEMENT OF DUTIES

Duty No	Details	Freq	%
1	CLINICAL		90
1.1	Maintains competence to practice in accordance with national competency standards for the Registered Nurse as described by the Nursing and Midwifery Board of Australia.		
1.2	Responsible for the assessment, planning, implementation, facilitation and evaluation of the delivery of patient care.		
1.3	Ensures all documentation complies with EQUiP standards and provides an accurate medico-legally sound record of each care episode.		
1.4	Coordinates multidisciplinary services to ensure a high standard of health care delivery.		
1.5	Identifies patient education needs and implements appropriate teaching, including coordination of patient education programs.		
1.6	Plans and facilitates nursing activities and performs role of shift coordinator as required.		
1.7	Actively participates in improvement and research programs in conjunction with others to improve the unit or hospital health care service.		
1.8	Participates in unit based decision-making and supports the achievement of unit, hospital, regional and WA Country Health Service objectives.		
1.9	Facilitates others in their development of competencies and organisational skills including performance management of designated nursing personnel.		
1.10	Be accountable for the safe, efficient and effective use of resources, including assisting with forward planning for the unit.		
1.11	Promotes education activities including but not limited to orientation, preceptorship, supervision and validation.		
2	OTHER		10
2.1	Other duties as directed by the Line Manager or their delegate.		

The occupant of this position will be expected to comply with and demonstrate a positive commitment to the highest achievement level in Equal Employment Opportunity, Occupational Safety & Health, Public Sector Standards, Code of Conduct, Code of Ethics, Quality Improvement, Performance Management, Customer Focus, Disability Services Act and Confidentiality throughout the course of their duties.

WA Country Health Service

26 October 2015

REGISTERED

TITLE	Registered Nurse - Theatre	POSITION NO	608037
		CLASSIFICATION	RNM Level 1

Section 5 - SELECTION CRITERIA

ESSENTIAL:

- 1 Eligible for registration in the category of Registered Nurse by the Nursing and Midwifery Board of Australia.
- 2 Demonstrated competent nursing practice, within the relevant practice setting
- 3 Demonstrated competence in planning, coordination and decision making in the management of patients within the relevant practice setting.
- 4 Demonstrated ability to function as a team leader and team member.
- 5 Demonstrated effective written and verbal communication and interpersonal skills.
- 6 Demonstrates incorporation of quality and risk management within practice.

DESIRABLE:

- 1 Current knowledge and commitment to Equal Opportunity in all aspects of employment and service delivery.
- 2 Demonstrated computer skills.
- 3 Possession of or progression towards an appropriate post-graduate qualification.

Section 6 - APPOINTMENT FACTORS

Location	Derby	Accommodation	As per WACHS Kimberley Accommodation policy
Appointment/ Allowances Conditions	<p>Appointment is subject to:</p> <ul style="list-style-type: none"> • Evidence of current registration by the Nursing and Midwifery Board of Australia must be provided prior to commencement • Completion of a 100 point identification check • This position is subject to a successful Criminal Record Screening and a Working with Children (WWC) Check. • Successful Pre-Placement Health Screening clearance <p>Allowances include:</p> <ul style="list-style-type: none"> • District Allowance as applicable • Annual Leave Travel Concession as applicable • Air-conditioning Subsidy as applicable • Additional week Northwest Leave 		
Specialised equipment operated			

Section 7 - CERTIFICATION

The details contained in this document are an accurate statement of the duties, responsibilities and other requirements of the position.



Signature and Date: ____/____/____

Signature and Date: ____/____/____

**Operations Manager
Derby and Fitzroy Valley Health Service**

**Regional Director
WACHS Kimberley**

As occupant of the position I have noted the statement of duties, responsibilities and other requirements as detailed in this document.

Name	Signature	Date Appointed	Date Signed