

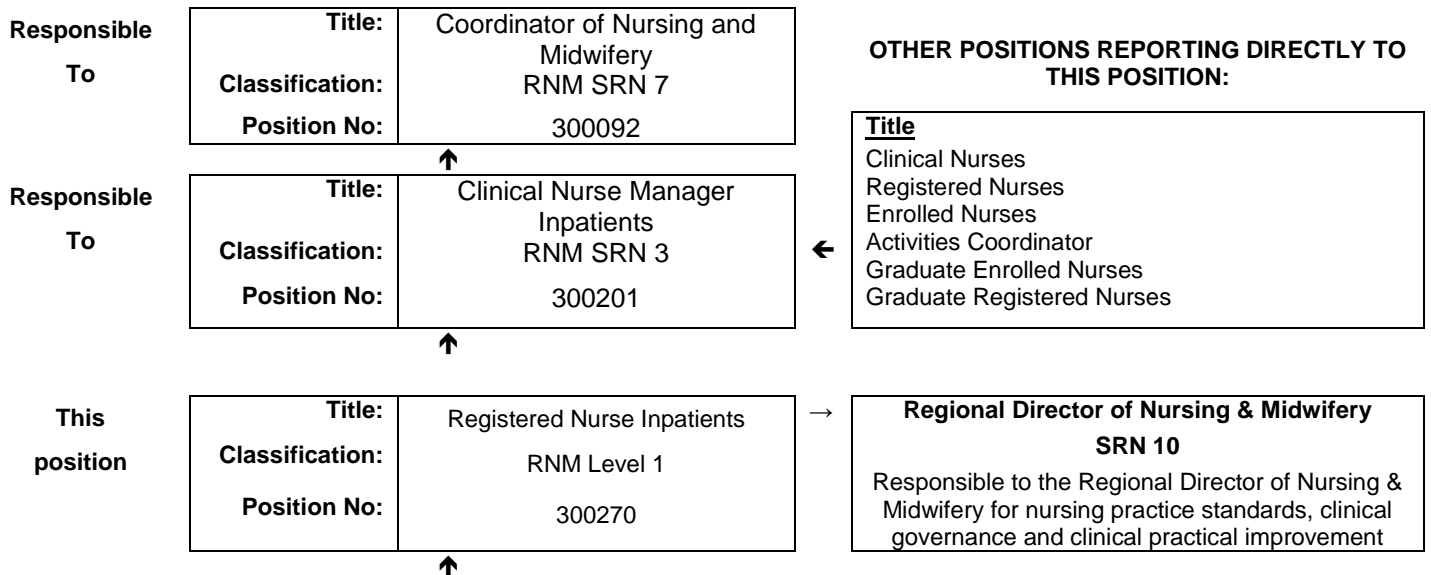


## JOB DESCRIPTION FORM

### Section 1 – POSITION IDENTIFICATION

<b>WA COUNTRY HEALTH SERVICE</b>		<b>Position No:</b>	300270
<b>Division:</b>	Pilbara	<b>Title:</b>	Registered Nurse Inpatients
<b>Branch:</b>	Hedland Health Campus	<b>Classification:</b>	RNM Level 1
<b>Section:</b>	Nursing Services	<b>Award/Agreement</b>	Nurses and Midwives Agreement

### Section 2 – POSITION RELATIONSHIPS



<b>Positions under direct supervision:</b>	<b>← Other positions under control:</b>																
<table border="1"> <thead> <tr> <th>Position No.</th> <th>Title</th> </tr> </thead> <tbody> <tr><td> </td><td> </td></tr> <tr><td> </td><td> </td></tr> <tr><td> </td><td> </td></tr> </tbody> </table>	Position No.	Title							<table border="1"> <thead> <tr> <th>Category</th> <th>Number</th> </tr> </thead> <tbody> <tr><td> </td><td> </td></tr> <tr><td> </td><td> </td></tr> <tr><td> </td><td> </td></tr> </tbody> </table>	Category	Number						
Position No.	Title																
Category	Number																

### Section 3 – KEY RESPONSIBILITIES

The primary responsibility of the Registered Nurse is to deliver comprehensive, evidence based nursing care for patients within the scope of practice of a Registered Nurse.

TITLE	Registered Nurse Inpatients	POSITION NO	300270
		CLASSIFICATION	RNM Level 1



The WA Country Health Service (WACHS) is the largest country health system in Australia and one of the biggest in the world, providing health services to approximately half a million people, including 45,000 Aboriginal people, over a vast two and a half million square kilometres area.

WA Country Health Service hospitals handle as many births as the State’s major maternity hospital – and as many emergency presentations as Perth metropolitan hospitals combined. The range of health services provided cover population health, mental health, Indigenous health and aged care.

Our dedicated and committed staff work hard to fulfil our purpose *Working together for a healthier country WA*, to deliver health services that support the health and well-being of individuals and communities in rural and remote Western Australia.

**OUR PURPOSE**

To improve, promote and protect the health of Country Western Australians.

**WHAT WE STAND FOR**

**Quality health services for all.**

**Improving the health of Aboriginal people and those most in need.**

**A fair share for country health.**

**Supporting our team - workforce excellence and stability.**

**OUR VALUES**

**Community** – making a difference through teamwork, generosity and country hospitality

**Compassion** – listening and caring with empathy and dignity.

**Quality** – creating a quality health care experience for every consumer.

**Integrity** - accountability, honesty and professional, ethical conduct in all that we do.

**Justice** - valuing diversity with a fair share for all.

**WA Country Health Service- Pilbara**  
**10<sup>th</sup> April 2016**  
**REGISTERED**

<b>TITLE</b>	Registered Nurse Inpatients	<b>POSITION NO</b>	300270
		<b>CLASSIFICATION</b>	RNM Level 1

#### Section 4 – STATEMENT OF DUTIES

<b>Duty No.</b>	<b>Details</b>	<b>Freq.</b>	<b>%</b>
	<p>The Registered Nurse will:</p> <ol style="list-style-type: none"> <li>1. Maintains national competence for Registered Nurses to practice in accordance with the Nursing and Midwifery Board of Australia.</li> <li>2. Responsible and accountable for patient safety and quality of care through planning, coordination, performing, facilitating and evaluating the delivery of patient care in the practice setting</li> <li>3. Provides high level evidenced based nursing care within the scope of nursing practice decision making framework, following clinical pathways, policies, procedures and adopting a risk management customer focused approach in patient care.</li> <li>4. Coordinate multidisciplinary services to ensure a high standard of customer focused health care delivery.</li> <li>5. Identifies patient education needs and implements appropriate teaching, including coordination of patient education programs.</li> <li>6. Plans and facilitates nursing activities and performs role of shift coordinator on a shift by shift basis being responsible for student nurses and/or Enrolled Nurses and/or Assistants in Nursing under their supervision.</li> <li>7. Fulfils National governing Safety and Quality Health Service Standards requirements including but not limited to: <ol style="list-style-type: none"> <li>a. Participating in continuous safety and quality improvement actions, such as audits, reviews and drills that result in improvements to patient care, staff knowledge or the consumers experience and that align with actions described within the standard</li> <li>b. Participating with the development, implementation, reporting and monitoring of quality assurance measures and activities</li> <li>c. Ensuring records and statistics are kept in accordance with established procedures</li> <li>d. Undertaking annual performance development review</li> </ol> </li> <li>8. Participates in unit based decision-making and supports the achievement of unit, hospital, regional and WA Country Health Service objectives.</li> <li>9. Facilitates others in their development of competencies and organisational skills including performance management of designated nursing personnel.</li> <li>10. Be accountable for the safe, efficient and effective use of resources, including assisting with forward planning for the unit.</li> <li>11. Promotes education activities including but not limited to orientation, preceptorship, supervision and validation.</li> </ol> <p>Other duties as requested by the line manager.</p>		100

The occupant of this position will be expected to comply with and demonstrate a positive commitment to the WACHS values and the highest achievement in demonstrating positive commitment to Equal Employment Opportunity, Occupational Safety & Health, Public Sector Standards, Code of Conduct, Code of Ethics, Quality Improvement, Performance Management, Customer Focus, Disability Services Act and Confidentiality throughout the course of their duties.

<b>TITLE</b>	Registered Nurse Inpatients	<b>POSITION NO</b>	300270
		<b>CLASSIFICATION</b>	RNM Level 1

### Section 5 – SELECTION CRITERIA

#### ESSENTIAL

1. Eligible for registration in the category of Registered Nurse by the Nursing and Midwifery Board of Australia.
2. Demonstrated clinical knowledge and experience in the delivery of evidenced based nursing care within the relevant practice setting.
3. Demonstrated competence in planning, coordination and decision making within the relevant practice setting.
4. Demonstrated ability to function as a team leader and team member.
5. Demonstrated effective communication (written and verbal) and interpersonal skills including negotiation and conflict resolution skills
6. Demonstrates incorporation of quality and risk management principles within practice.
7. Current knowledge of legislative obligations for Equal Opportunity, Disability Services and Occupational Safety and Health, and how these impact on employment and service delivery.
8. Demonstrated computer skills.
9. Demonstrated understanding and knowledge of the Aboriginal cultural respect framework.

#### DESIRABLE

1. Possession of or progression towards an appropriate post-graduate qualification
2. Knowledge of current health issues and the organisational culture of rural health services.

### Section 6 – APPOINTMENT FACTORS

<b>Location</b>	South Hedland	<b>Accommodation</b>	As determined by the WA Country Health Service Policy
<b>Allowances/ Appointment Conditions</b>	Appointment is subject to: <ul style="list-style-type: none"> <li>• Evidence of current registration by the Nursing and Midwifery Board of Australia must be provided prior to commencement.</li> <li>• Completion of a 100 point identification check</li> <li>• Successful Criminal Record Screening clearance</li> <li>• Evidence of current Working with Children check</li> <li>• Successful Pre- Placement Health Screening clearance</li> </ul>		
<b>Specialised equipment operated</b>			

### Section 7 – CERTIFICATION

The details contained in this document are an accurate statement of the duties, responsibilities and other requirements of the position.

**WA Country Health  
Service- Pilbara**  
  
10<sup>th</sup> April 2016  
  
**REGISTERED**

**WA Country Health  
Service- Pilbara**  
  
10<sup>th</sup> April 2016  
  
**REGISTERED**

Signature and Date: \_\_\_\_\_  
**Regional Director of Nursing & Midwifery**

Signature and Date: \_\_\_\_\_  
**Regional Director - Pilbara**

As occupant of the position I have noted the statement of duties, responsibilities and other requirements as detailed in this document.

Name	Signature	Date Appointed	Date Signed

**WA Country Health  
Service- Pilbara**  
  
10<sup>th</sup> April 2016  
  
**REGISTERED**