

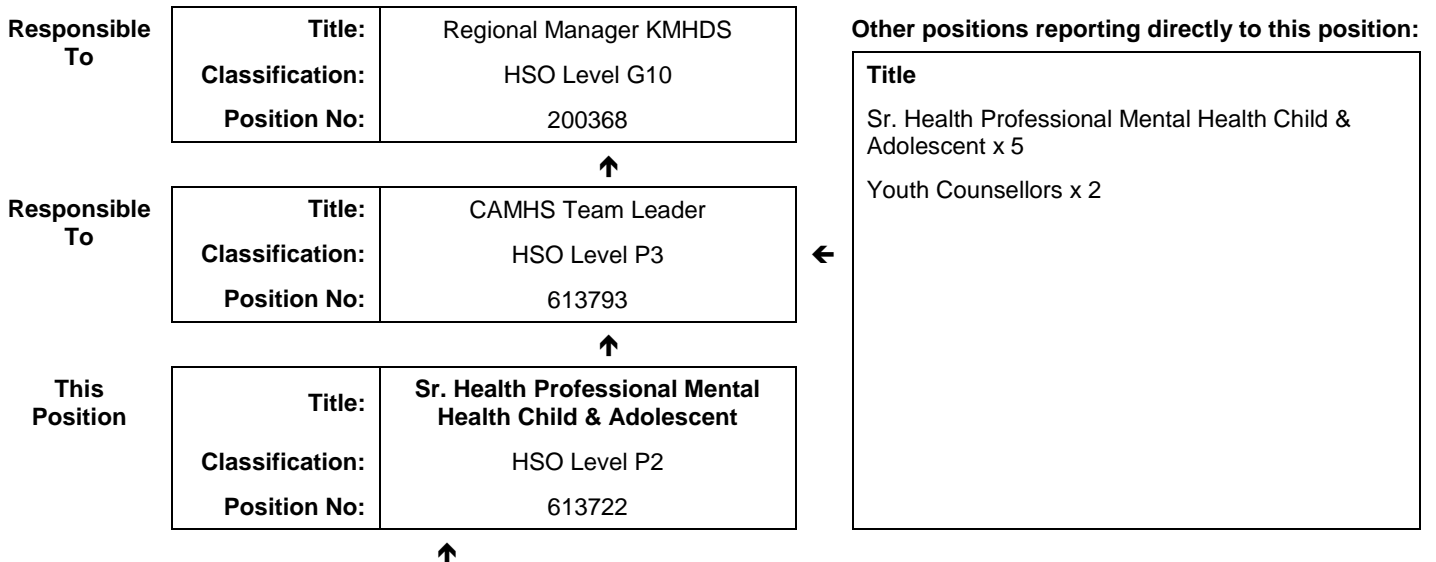


## JOB DESCRIPTION FORM

### Section 1 - POSITION IDENTIFICATION

		<b>Position No:</b>	613722
<b>Division:</b>	Kimberley	<b>Title:</b>	<b>Sr. Health Professional Mental Health Child &amp; Adolescent</b>
<b>Branch:</b>	Kimberley Mental Health & Drug Service (KMHDS)	<b>Classification:</b>	HSO Level P2
<b>Section:</b>	Child and Adolescent Mental Health Service	<b>Award/Agreement:</b>	Health Salaried Officers Agreement

### Section 2 - POSITION RELATIONSHIPS



<b>Positions under direct supervision:</b>	<b>← Other positions under control:</b>								
<table border="1"> <thead> <tr> <th>Position No</th> <th>Title</th> </tr> </thead> <tbody> <tr> <td>N/A</td> <td></td> </tr> </tbody> </table>	Position No	Title	N/A		<table border="1"> <thead> <tr> <th>Category</th> <th>Number</th> </tr> </thead> <tbody> <tr> <td></td> <td></td> </tr> </tbody> </table>	Category	Number		
Position No	Title								
N/A									
Category	Number								

### Section 3 - KEY RESPONSIBILITIES

Provides an advanced clinical service to children and young people with mental health conditions and their families. Provides support, liaison, information, consultancy and training to CAMHS and other relevant Kimberley services.

TITLE	Sr. Health Professional Mental Health Child & Adolescent	POSITION NO	613722
		CLASSIFICATION	HSO Level P2



The WA Country Health Service (WACHS) is the largest country health system in Australia and one of the biggest in the world, providing health services to approximately half a million people, including 45,000 Aboriginal people, over a vast two and a half million square kilometres area.

WA Country Health Service hospitals handle as many births as the State's major maternity hospital – and as many emergency presentations as Perth metropolitan hospitals combined. The range of health services provided cover population health, mental health, Indigenous health and aged care.

Our dedicated and committed staff work hard to fulfil our purpose *Working together for a healthier country WA*, to deliver health services that support the health and well-being of individuals and communities in rural and remote Western Australia.

### OUR PURPOSE

To improve, promote and protect the health of country Western Australians.

### WHAT WE STAND FOR

Quality health services for all.

Improving the health of Aboriginal people and those most in need.

A fair share for country health.

Supporting our team – workforce excellence and stability.

### OUR VALUES

**Community** – making a difference through teamwork, generosity and country hospitality.

**Compassion** – listening and caring with empathy and dignity.

**Quality** – creating a quality health care experience for every consumer.

**Integrity** – accountability, honesty and professional, ethical conduct in all that we do.

**Justice** – valuing diversity with a fair share for all.

**WA Country Health Service**

**19 JANUARY 2016**

**REGISTERED**

TITLE	Sr. Health Professional Mental Health Child & Adolescent	POSITION NO	613722
		CLASSIFICATION	HSO Level P2

#### Section 4 - STATEMENT OF DUTIES

Duty No	Details	Freq	%
<b>1</b>	<b>CLINICAL</b>		<b>60</b>
1.1	Provides case management for children and adolescents with mental health conditions and their families, utilising a range of interventions including assessment, counselling, play therapy, group work and other therapeutic interventions.		
1.2	Provides crisis intervention, treatment & referral to individuals, families & the community.		
1.3	Actively participates in interdisciplinary case conferences & clinical team meetings.		
1.4	Provides support, information, training and education for team members & staff from other agencies regarding care & management of clients in regard to mental health &/or child sexual abuse. Initiates & develops links with relevant community agencies.		
1.5	Participates in ongoing evaluation of clinical practice, quality, management programs & quality improvement activities.		
1.6	Contributes to the development of mental health services which are responsive to community needs & priorities by participating in planning, implementation & evaluation processes including the provision of statistical returns, submissions & analysis of data.		
<b>2</b>	<b>MANAGEMENT/REPRESENTATION</b>		<b>15</b>
2.1	Maintains adequate records & collates statistical data in accordance with the requirements of KMHDS & the Office of Mandatory Reporting.		
2.2	Evaluates clinical practice of evidence based assessment tools & treatment models; utilises & completes National Outcome Casemix Collection (NOCC) Measures & PSOLIS records.		
2.3	Manages workload in accordance with professional practice & standards.		
2.4	Collaborates, liaises & advises the CAMHS Team Leader & the Senior CAMH Professional (MR) on issues affecting the delivery of services, in relation to CSA.		
2.5	Participates in the Performance Management System with Supervisor & develops & extends own professional knowledge.		
2.6	Conducts activities in compliance with the Mental Health Act (2014), National Mental Health Standards, the Public Service Management Act, Public Sector Code of Ethics, WACHS Code of Conduct, Health Service Policies & Guidelines, Professional Principles & Ethics.		
<b>3</b>	<b>EDUCATION, DEVELOPMENT AND RESEARCH</b>		<b>20</b>
3.1	Where related to Child & Adolescent Mental Health assists with provision of staff development & educational initiatives, in collaboration with Senior staff.		
3.2	Works with other services to promote equity of access, & high quality specialist mental health services for children & young people.		
3.3	Initiates & participates in relevant research & evaluation in CAMHS as required.		
3.4	Develops & participates in educational programmes for clients, caregivers, health & welfare staff, students & community agencies.		
<b>4</b>	<b>OTHER</b>		<b>5</b>
4.1	Other duties as directed by line manager or their delegate.		

*The occupant of this position will be expected to comply with and demonstrate a positive commitment to the highest achievement level in Equal Employment Opportunity, Occupational Safety & Health, Public Sector Standards, Code of Conduct, Code of Ethics, Quality Improvement, Performance Management, Customer Focus, Disability Services Act and Confidentiality throughout the course of their duties.*

**WA Country Health Service**

**19 JANUARY 2016**

**REGISTERED**

TITLE	Sr. Health Professional Mental Health Child & Adolescent	POSITION NO	613722
		CLASSIFICATION	HSO Level P2

## Section 5 - SELECTION CRITERIA

### ESSENTIAL:

1. Tertiary qualification in Social work or Occupational Therapy or Psychology or Registered Mental Health and eligible for registration with the relevant professional board or body.
2. Demonstrated sound knowledge, experience and understanding of specialist services to children and adolescents emotional, behavioural, psychological and psychiatric disorders including the demonstrated ability to implement a range of therapeutic techniques at advance level.
3. Well-developed communication, interpersonal and organisational skills and the ability to work with other health professionals within a multidisciplinary team.
4. Sound understanding of cultural matters, and other contemporary issues affecting the delivery of community based Child and Adolescent Mental Health Services in rural and remote areas.
5. Experience in the delivery of health promotion, skill development and educational programs for children, adolescents and other staff within the agency and related agencies.
6. Demonstrated ability and willingness to provide effective use and/or management of corporate and clinical governance systems, data collection, clinical evaluation systems and databases.
7. Current C Class drivers Licence and an ability and willingness to travel including overnight stays away from home.

### DESIRABLE:

1. Current knowledge and commitment to Equal Opportunity in all aspects of employment and service delivery.
2. Demonstrated knowledge of research and evaluation.
3. Experience working in consultation with carers and consumers.

## Section 6 – APPOINTMENT FACTORS

<b>Location</b>	Kununurra	<b>Accommodation</b>	As per WACHS Kimberley Accommodation Policy
<b>Allowances/ Appointment Conditions</b>	<p><b>Appointment is subject to:</b></p> <ul style="list-style-type: none"> <li>• Evidence of current registration by or eligibility for the appropriate board of Australia or full membership of appropriate association must be provided prior to commencement.</li> <li>• Completion of a 100 point identification check</li> <li>• Successful Criminal Record Screening clearance and Working With Children Check (WWCC)</li> <li>• Successful Pre- Placement Health Screening clearance</li> <li>• Evidence of current Drivers Licence</li> </ul> <p><b>Allowances include:</b></p> <ul style="list-style-type: none"> <li>• District Allowance as applicable</li> <li>• Annual Leave Travel Concession as applicable</li> <li>• Air Conditioning Subsidy as applicable</li> <li>• Additional week Northwest Leave</li> </ul>		
<b>Specialised equipment operated</b>			

## Section 7 – CERTIFICATION

The details contained in this document are an accurate statement of the duties, responsibilities and other requirements of the position.

Signature and Date: \_\_\_\_/\_\_\_\_/\_\_\_\_

**Director**  
**Kimberley Mental Health and Drug Services**

Signature and Date: \_\_\_\_/\_\_\_\_/\_\_\_\_

**Regional Director**  
**WACHS Kimberley**

As occupant of the position I have noted the statement of duties, responsibilities and other requirements as detailed in this document.

Name	Signature	Date Appointed	Date Signed

**WA Country Health Service**

**19 JANUARY 2016**

**REGISTERED**