

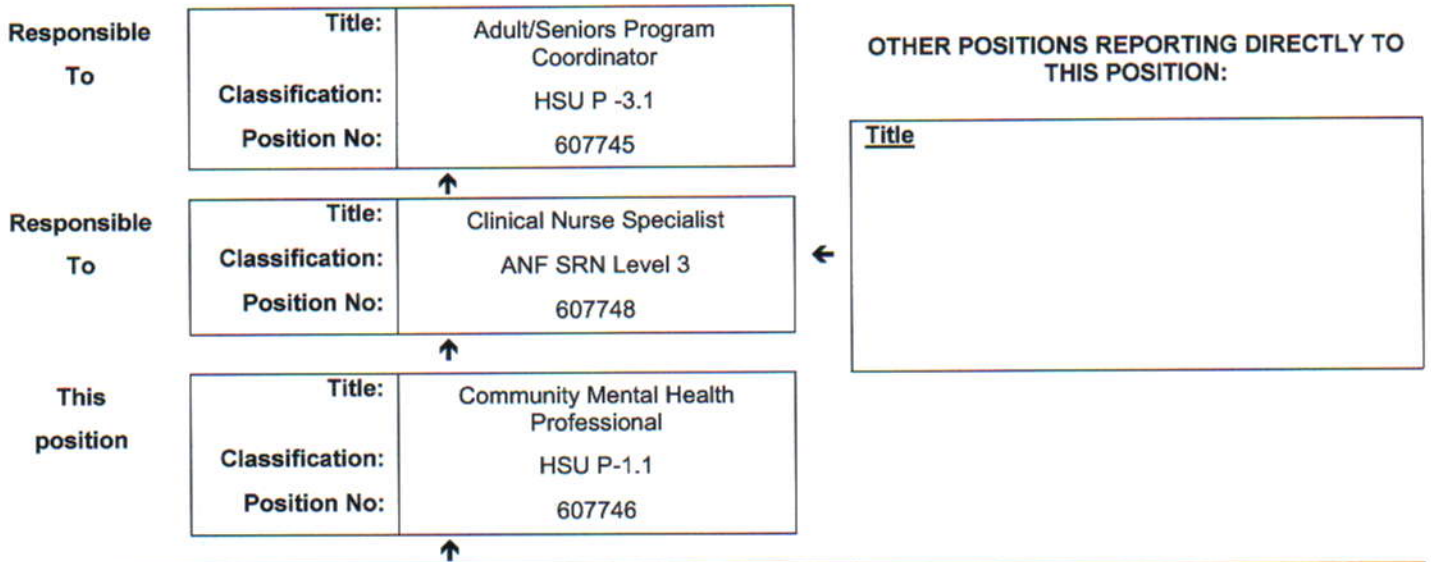


JOB DESCRIPTION FORM

Section 1 – POSITION IDENTIFICATION

WA Country Health Service		Position No:	607746
Division:	Wheatbelt	Title:	Community Mental Health Professional
Branch:	Mental Health Service	Classification:	HSOA P-1.1
Section:	Adult & Seniors Program	Award/Agreement	WA Health – HSU Award 2006 and Health Service Union – WA Health State Industrial Agreement 2008.

Section 2 – POSITION RELATIONSHIPS



Positions under direct supervision: Nil.	← Other positions under control:
Position No. Title	Category Number

Section 3 – KEY RESPONSIBILITIES

Assessment, planning and clinical care to clients of the Wheatbelt region for whom responsibility is allocated. Liaises with Government and non-government service providers to coordinate the provision of mental health services to clients and provide educational support to those agencies.

WA Country Health Service
 17 APR 2009
 REGISTERED

TITLE	Community Mental Health Professional	POSITION NO	607746
		CLASSIFICATION	HSU P-1.1

Section 4 – STATEMENT OF DUTIES

Duty No.	Details	Freq.	%
1.0	<u>CLINICAL/ PROFESSIONAL:</u>	D	85
1.1	Provides assessment and treatment for persons referred to the WMHS and support for their carers using a range of appropriate interventions.		
1.2	Acts as a case manager for cases allocated.		
1.3	Participates in mental health team meetings and intersectorial case conferences.		
1.4	Maintains client case notes meeting legal requirements.		
1.5	Assists in the establishment and maintenance of effective intersectorial relationships.		
1.6	Provides liaison with support services involved with carers and families of referred patients.		
1.7	Liaises, supports and consults with General Practitioners, government and non-government agencies to provide advice and support relating to managing clients with mental health problems.		
1.8	Facilitates and encourages a General Practitioner shared care model of service delivery.		
1.9	Participates as part of an integrated, multidisciplinary mental health team, in professional development activities, supervision, team management and triage rosters.		
1.10	Contributes to the maintenance of a safe work environment and safe clinical practise.		
1.12	Ensures practice adheres to the Mental Health Act 1996 and other relevant legislation.		
1.13	Provides clinical services with the child and adolescent program within competency level.		
1.14	Ensures own ongoing clinical competencies.		
2.0	<u>COMMUNITY DEVELOPMENT:</u>	D	5
2.1	Participates in a range of educational mental health promotion activities with external agencies.		
3.0	<u>ADMINISTRATION</u>	D	5
3.1	Collects statistical data in accordance with the Wheatbelt Mental Health Service requirements.		
3.2	Contribute to and maintain quality management systems that ensure mental health programs operate with an emphasis on the provision of high quality care to clients, families and the community.		
3.3	Ensures effective use of resources allocated to the position.		
3.4	Attends in-service training programs and positively participates in performance management programs.		
4.0	<u>OTHER</u>	O	5
4.1	Performs other duties as directed by Program Co-ordinator		

The occupant of this position will be expected to comply with and demonstrate a positive commitment to the highest achievement level in Equal Employment Opportunity and Diversity Policy, Prevention of Bullying, Harassment & Discrimination in the Workplace Policy, Occupational Safety & Health, Public Sector Standards, WA Health Code of Conduct, WA Public Sector Code of Ethics, Quality Improvement, Performance Management, Customer Focus, Disability Services Act and Confidentiality throughout the course of their duties.



TITLE	Community Mental Health Professional	POSITION NO	607746
		CLASSIFICATION	HSU P-1.1

Section 5 – SELECTION CRITERIA

ESSENTIAL

1. Tertiary qualification in Psychology, Occupational Therapy, Social Work or Nursing and eligibility for registration in WA.
2. Demonstrated clinical experience in assessment, treatment and case management with adults and seniors with mental illness.
3. Demonstrated knowledge in working with people with mental illness and co-occurring drug and/or alcohol issues.
4. Demonstrated ability to work effectively as a team member in a multidisciplinary team and ability to also work as an independent practitioner.
5. Working knowledge of the Mental Health Act 1996.
6. Demonstrated well developed communication, interpersonal and report writing skills.
7. Possession of a current "C" or "C (a)" Class Drivers License

DESIRABLE

1. Recent clinical experience in a rural community based service.
2. Understanding of the National Standards for Mental Health Services

Section 6 – APPOINTMENT FACTORS

Location	Wheatbelt	Accommodation	As determined by the WA Country Health Service Policy
Allowances/ Appointment Conditions	Appointment subject to: <ul style="list-style-type: none"> • Evidence of current registration with the Psychologist's Registration Board of WA or Occupational Therapists Registration Board of WA or Nurses and Midwives Board of Western Australia must be provided prior to commencement. • Completion of 100 point Identity check. • Successful Criminal Records Screening clearance. • This position is subject to a Working With Children (WWC) Check. This is a compulsory check for persons who carry out child-related work in Western Australia. • Pre-Placement Health Screening. • Possession of a current "C" or "C (a)" Class Drivers License and ability to travel throughout the region. 		
Specialised equipment operated			

Section 7 – CERTIFICATION

The details contained in this document are an accurate statement of the duties, responsibilities and other requirements of the position.

Signature and Date: _____
Executive Services
 17 APR 2009
 REGISTERED

Signature and Date: _____
Chief Executive Officer
 17 APR 2009
 REGISTERED

As occupant of the position I have noted the statement of duties, responsibilities and other requirements as detailed in this document.

Name	Signature	Date Appointed	Date Signed